

Bruno Genito–Tibor Kemenczei

THE LATE BRONZE AGE VESSELS FROM GYOMA 133 S. E. HUNGARY

THE STRATIGRAPHICAL EVIDENCE

During the excavations of the Italian Archaeological Mission in Hungary in 1985 (GENTIO 1986, 367-; *ibid.*, 1988, 81-) a large quantity of pottery fragments of the Gáva Culture (11th–9th century B.C.) were found at Gyoma, site 133. A large part of these fragments contributed to the reconstruction of 6 large "urn type" vessels of biconical shape and one of elongated shape of the Villanovan period.

On the southern edge of a large abandoned quarry of a brick factory (Fig. 1, 1)¹ the fragments were discovered along the eastern side of section number 4 (Fig. 1, 2) which had been opened. Trial-trenches were opened in order to establish the extension of the site which had already been identified, mainly as a Sarmatian settlement, during a field survey of the area (JANKOVICH–MAKKAY–SZÓKE 1989, 229)². Part of the site had probably been occupied by an ancient Kurgan, called "Csap Halom", now destroyed (Fig. 1, 3). This kurgan was located very close to another one, still standing, called Rigó "Halom", from which gold objects of Iron Age date were claimed to have been found at the beginning of the century (MÁRTON 1905, 234). It is probable, however, that these objects come from the first kurgan.³ The area of Gyoma 133 (Fig. 1, 1) contains at least two very large clay quarries, whose standing sections allowed a check of the stratigraphical quality of the archaeological deposits. The cleaning of the quarry sections proved to be extremely useful; indeed from the 13 sections examined in 1985, in fact, two pits of Sarmatian date, a Late Bronze Age pit, a simple grave and many other stratigraphical elements came to light (GENITO 1988, 81-).

Progressive excavation by steps (Fig. 2, 1) of section number 4, allowed the identification of the pits. The Late Bronze Age pit was located immediately to the east of a very large ovalshaped pit of Sarmatian date (Fig. 2, 2).⁴ The profile of the first pit was very clear and it was very clear and it was easily excavated after opening a square trench (no.3). The identification of the profile of the Late Bronze Age pit was much more complicated, though facilitated by the presence of a layer of large pottery fragments, distributed horizontally (Fig. 2, 3). The presence of this layer allowed us to verify that the pit had already been partly destroyed and to recognize its extension to the south beyond the line of section number 4; a

second level of sherds was moreover discovered above the first (Fig. 2, 4).

The lower layer contained *circa* 50 pottery fragments of medium and large size, among which were body and rim sherds. The whole layer extended over an area of 1 m x 0,60 m. The distribution of the fragments gave the immediate impression of the presence of a single big vessel or of a group of vessels that had been broken *in situ*. There are two possibilities: 1. either the vessels had been thrown intact into the pit where they then smashed, or 2. they had been deposited intact and subsequently broke under the pressure of the pit's fill.

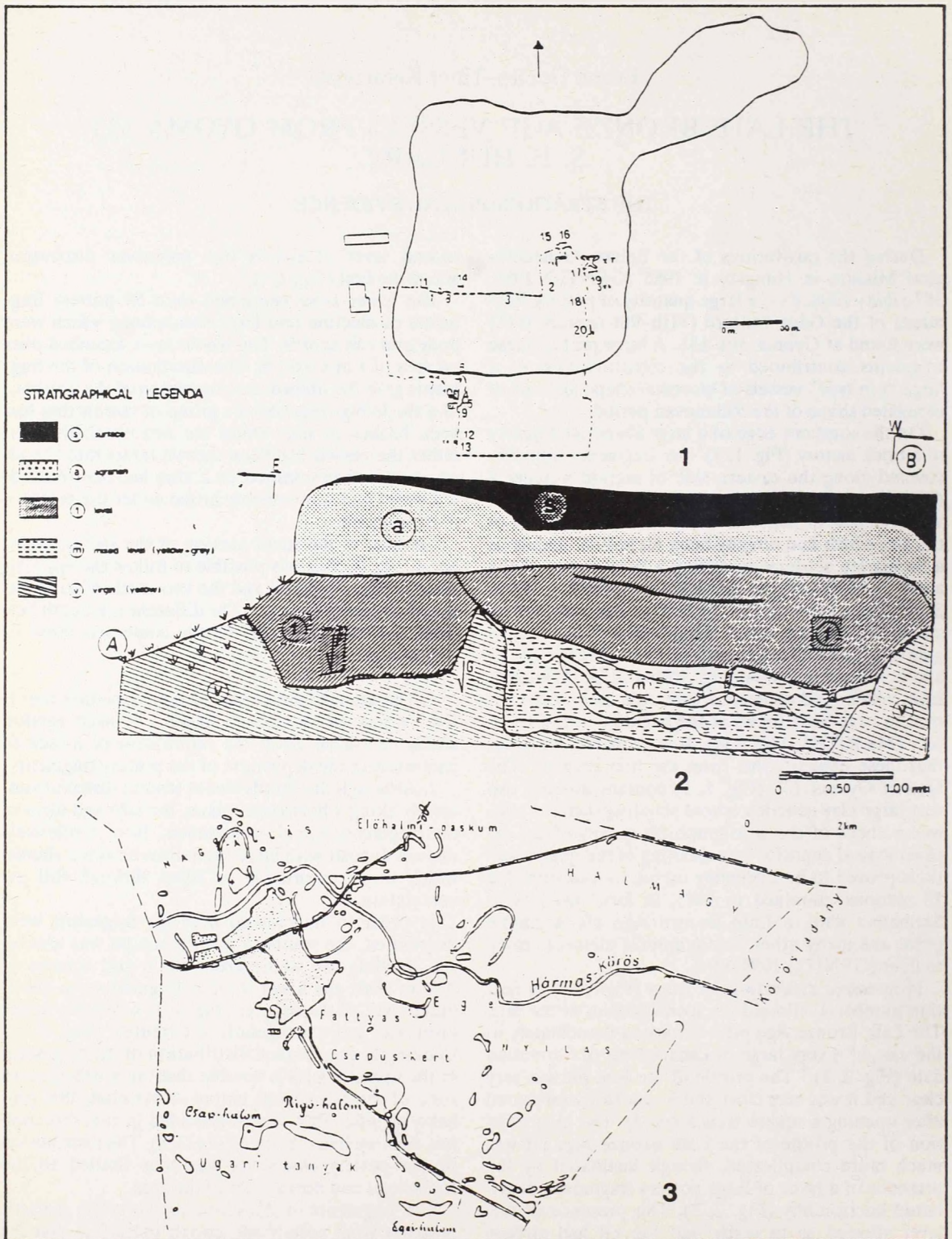
Looking at the small portion of the section number 4 (Fig. 2, 5) it was possible to follow the approximate profile of the pit and the two levels of superimposed pottery fragments. The difference in depth between the two levels may be the combined result of two factors:

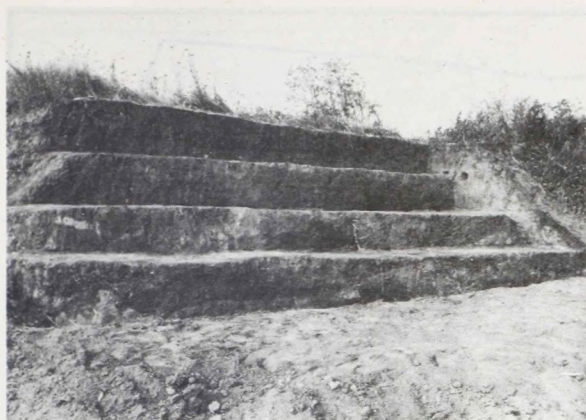
1. The unorthodox nature of the excavation that is the cutting of successive "steps" in each section which may have given the impression of a lack of continuity in the deposition of the pottery fragments.

2. Although the sherds would tend to distribute naturally along a horizontal plane, the size and form of the fragments would, nonetheless, from a relatively uneven deposit with large interstices between sherds, which would eventually be filled through soil accumulation.

In order to understand how the fragments were distributed, the southern part of the pit was excavated, dividing the whole area into 6 grid squares of 0,70 m each; the lower level of fragments was distributed over all the squares (Fig. 3, 1) whilst the upper level was more irregularly distributed (Fig. 3, 2). Looking at the detailed distribution of the fragments of the upper level it is notable that the north-eastern zone of the trench was empty of material; this probably signifies that the pit extended in that direction less than we had expected (Fig. 3, 3). The distribution of the pottery fragments was thus limited to the south-east and north-west of the area.

The fragments of the seven vessels come indiscriminately from both levels, clearly indicating that the two levels originally constituted a single deposit (Fig. 2, 6).





1



2



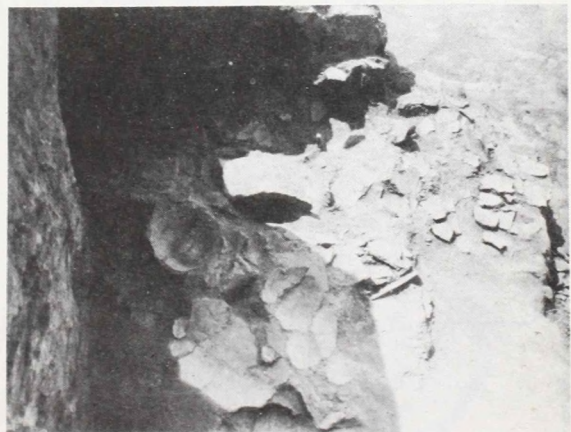
3



4



5



6

Fig. 2. 1: The progressive cuttings and the black profile of the pits; 2: The oval-shaped pit on the right and the Late Bronze Age pit on the left; 3: Lower layer of fragments in the Late Bronze Age pit; 4: Distribution of the fragments of the first layer; 5: Upper layer of fragments in the Late Bronze Age pit; 6: The complete distribution of the pottery fragments.

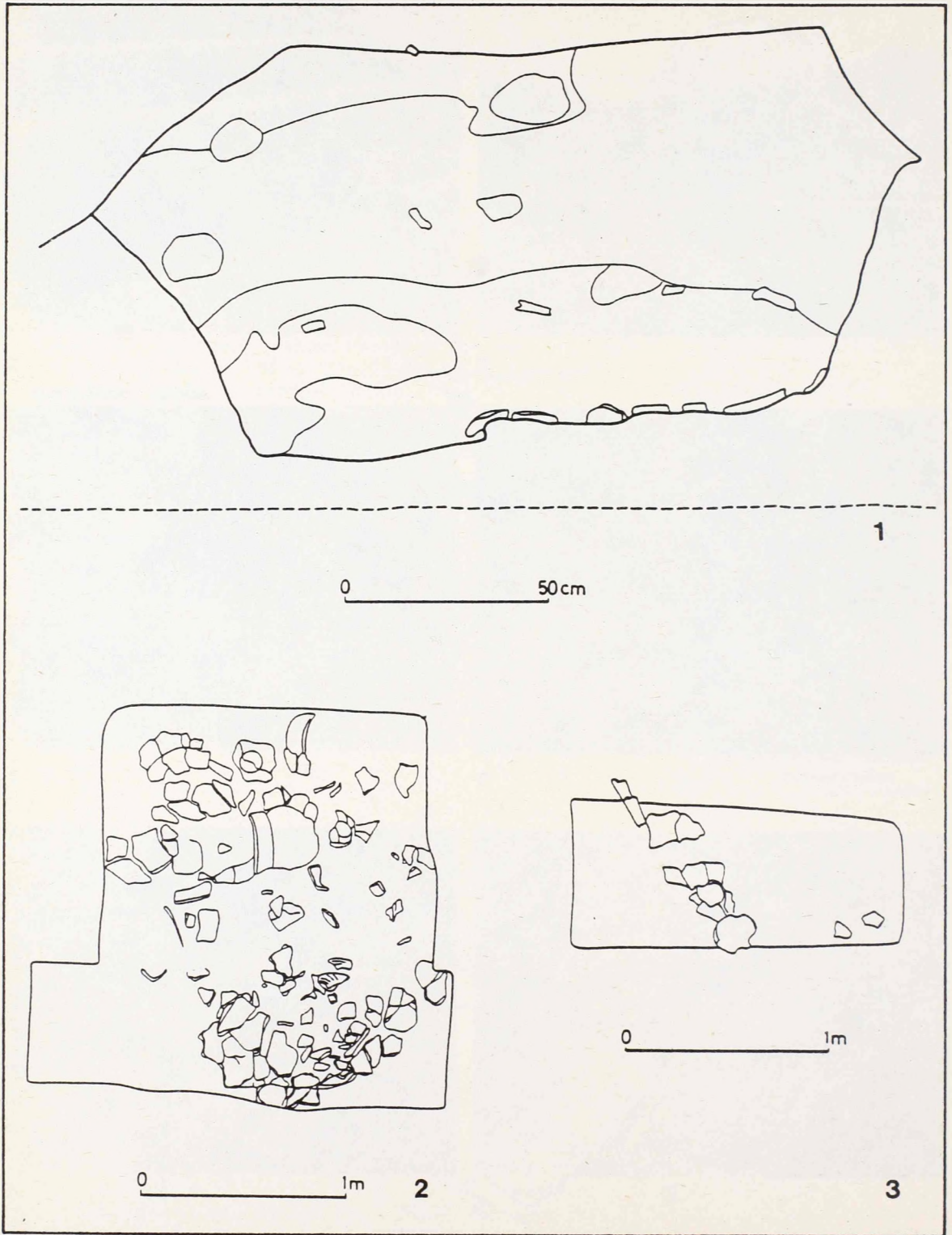


Fig. 3. 1: Small section of the pit; 2: The distribution of the fragments in the upper layer; 3: The distribution of the fragments in the lower layer.

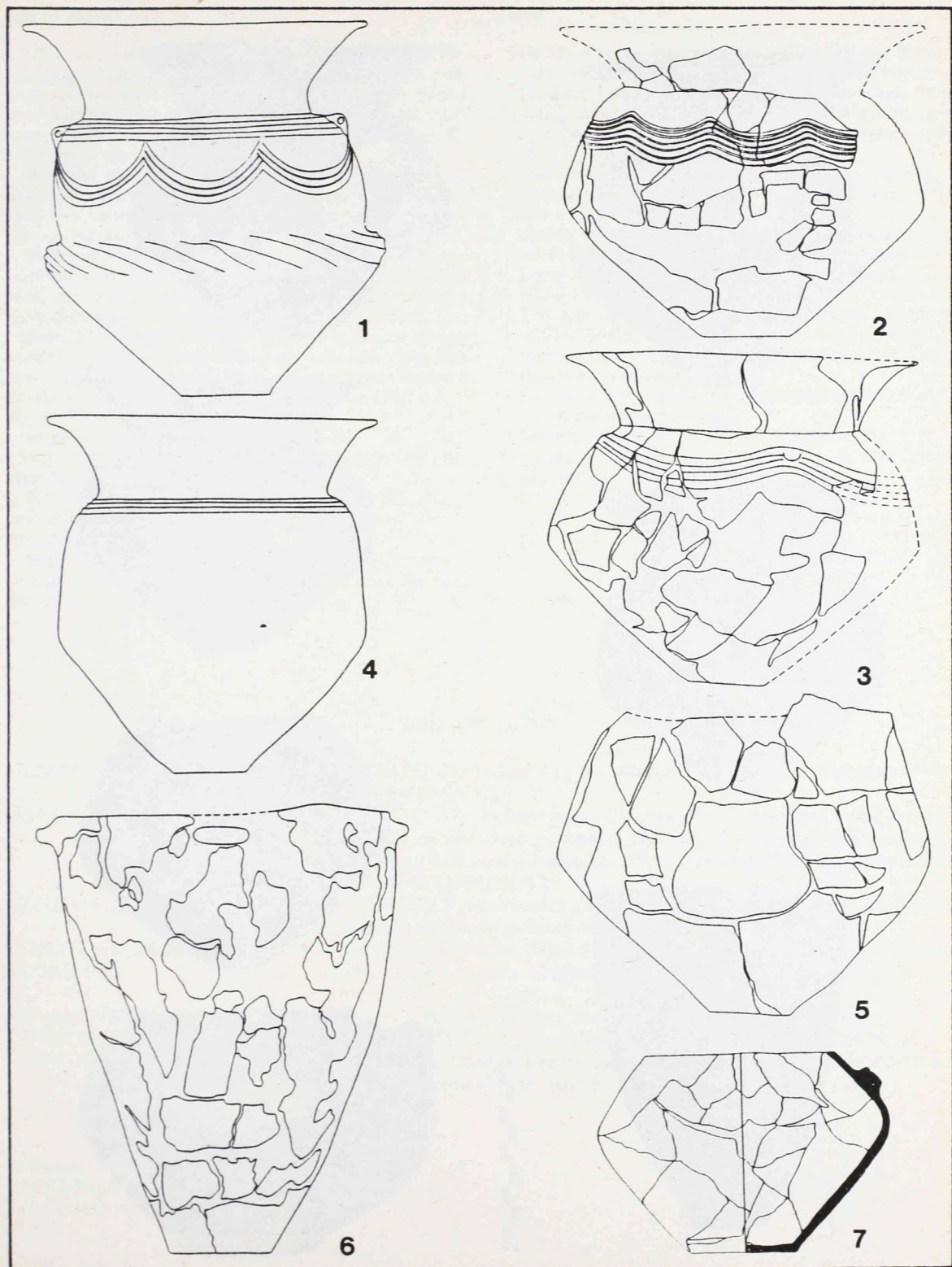


Fig. 4. 1-7: Late Bronze Age Vessels from Gyoma 133.

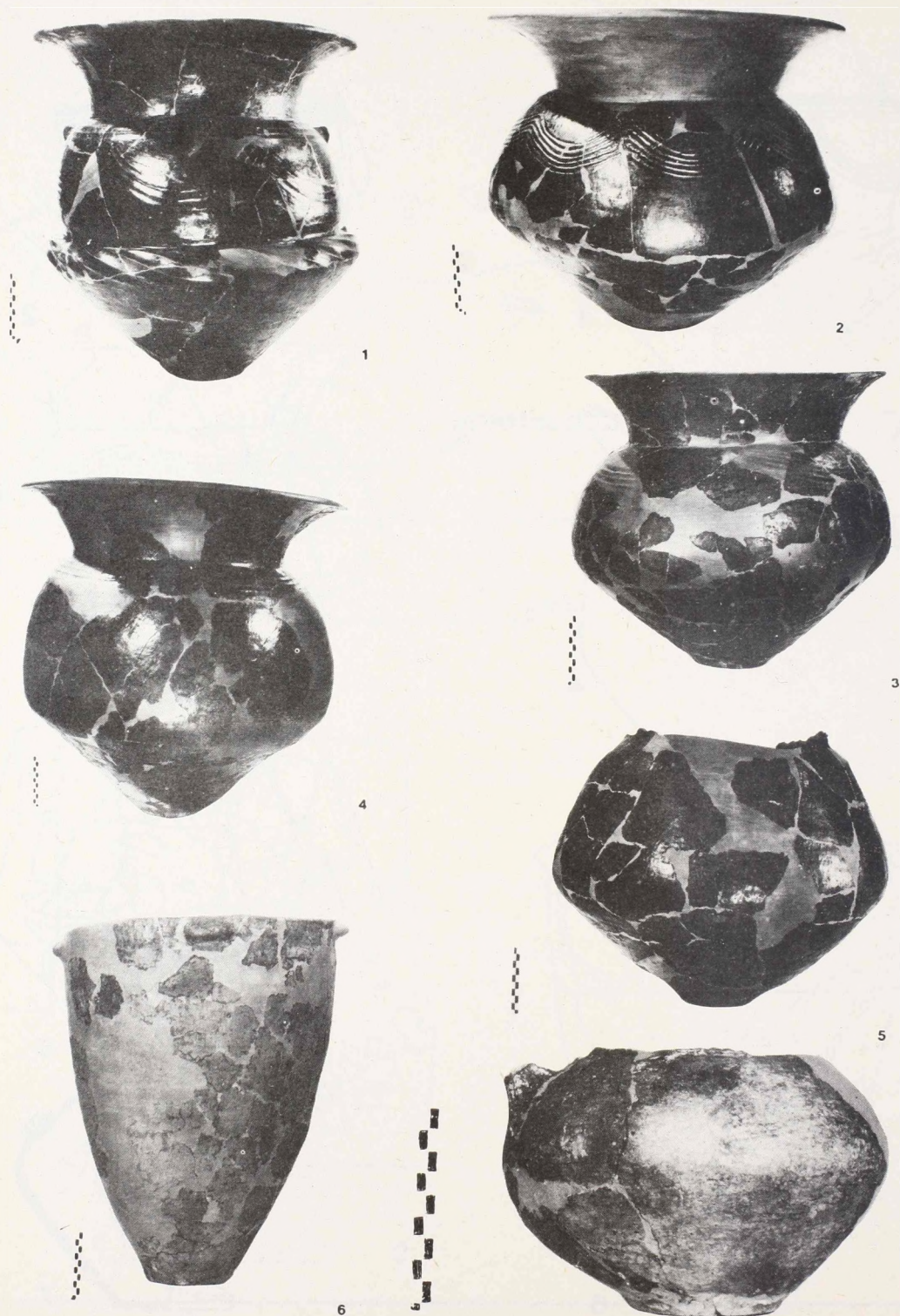


Fig. 5. 1-7: Late Bronze Age Vessels from Gyoma 133.

List of Vessels

Restored *biconical-Urn* (Inv. no. 676, Institute of Archaeology, Budapest), coarse orange ware with a black polished surface, small flat base, large high neck, very flaring rim; decorated with very lightly engraved parallel lines and wavy channelling. height 105, Diameter of the mouth 97, Diameter of the base 30 cm (Fig. 4, 1; 5, 1).

Restored *biconical-Urn* (Inv. no. 677), Coarse orange ware with a black polished surface, small flat base, large high neck very flaring rim; decorated with very lightly engraved wavy channelling. H. 49, Db. 12 cm (Fig. 4, 2; 5, 2).

Restored *biconical-Urn* (Inv. no. 675), coarse orange ware with a black polished surface, small flat base, large high neck, very flaring rim; decorated with very lightly engraved wavy channeling. H. 46, Dm. 47, Db. 10 cm (Fig. 4, 3; 5, 3).

Restored *biconical-Urn* (Inv. no. 1137), coarse orange ware with a black polished surface, small flat base, large high neck, very flaring rim; decorated with very lightly engraved parallel channelling. H. 69, Dm. 64, Db. 14 cm (Fig. 4, 4; 5, 4).

Fragmentary restored *biconical-Urn* (Inv. no. 1138), coarse orange ware with a black polished surface, small flat base. H. 44, Db. 11 cm (Fig. 4, 6; 5, 6).

Restored *elongated-shaped Pot* (Inv. no. 678), coarse orange ware with polished surface, small flat base. H. 59, Dm. 46, Db. 14 cm (Fig. 4, 6; 5, 6).

Fragmentary restored *biconical-Jug* (Inv. no. 679), coarse orange ware with a black polished surface, small flat base with a vertical handle. H. 14, Db. 7 cm (fig. 4, 7; 5, 7).⁵

Notes

1 For the first references to Gyoma Téglygyár see. KOVALOVSKI 1958 a and 1958b. The first Italian activity in Hungary was related to Gyoma 133 though it was badly damaged site. The standing sections of the quarry'edges appeared very promising in terms of stratigraphical quality.

2 The work carried out by a group of the Archaeological Institute of the Hungarian Academy of Sciences identified a very ample archaeological area distributed almost entirely inside the quarry. The rescue excavation on the site in late spring of 1987 demonstrated that the archaeological area was far larger than had been expected (GENITO forthcoming a).

3 The hypothesis goes back to Dr. Makkay, (JANKOVICH-MAKKAY-SZÓKE, 1989, 214-219). I take the occasion here to express my thanks to him for the numerous discussions on the question.

4 For the detailed description of the excavation of the Pit see GENITO, forthcoming a.

5 Drawings: Fig. 1, 1: M. Cattani, B. Genito; Fig. 1, 2: B. Genito, I. Tiscornia, C. Cristilli; Fig. 1, 3: after Jankovich/Makkay/Szóke 1989, 184, Map; Fig. 3, 1-3: B. Genito; Fig. 4, 1-7: S. Pracchia, B. Dukay.

Inv. no. of the Photographs: Fig. 2, 1-6: Istituto Italiano per il Medio ed Estremo Oriente, Dep. Neg. L. 15732/25, 16355/29a, 15732/34, 15728/8, 13733/36, 15728/32; Fig. 5, 1-7: Hungarian Institute of Archaeology, 130141, 130140, 132511, 130137, 130139, 132510, 132512.

BIBLIOGRAPHY

GENITO 1986

B. GENITO, *The Italian Archaeological Activity in Hungary*. East und West, 36-4 (1986) 367-375

GENITO 1988

B. GENITO, *The Archaeological Cultures of the Sarmatians with a Preliminary Note on the Trial Trenches at Gyoma 133: a Sarmatian Settlement in South-Eastern Hungary (campaign 1985)*. Annali dell'Istituto Universitario Orientale 48 (1988) 81-126.

GENITO forthcoming a

B. GENITO, *Trial-trenches at Gyoma 133: a Second Interim Report on a Sarmatian settlement in South-Hungary (campaign 1986/98)*.

JANKOVICH-MAKKAY-SZÓKE 1989

D. JANKOVICH-J. MAKKAY-B. SZÓKE, *Békés megye Régészeti Topográfiaja. A szarvasi járás*. Magyarország Régészeti Topográfiaja 8. Budapest 1989.

KOVALOVSKI 1985a

J. KOVALOVSKI, *Gyoma, Ziegelfabrik* ArchÉrt 85 (1985) 205.

KOVALOVSKI 1958b

J. KOVALOVSKI, *Gyoma, Téglygyár*. RégFüz. ser. 1, 10 (1958) 30-31.

MÁRTON 1905

L. MÁRTON, *Skytha aranyelet gyomai halomsírból. - The Golden Scythian Find from Gyoma Kurgan*. ArchÉrt 25 (1905) 234-240.

B. Genito

IsMEO-Department of Asian Studies

Oriental Institute

Naples

CHRONOLOGY OF THE POTTERY FIND FROM GYOMA

There is a significant number of vessels from the Hungarian Plain which display similarities to the Gyoma finds in their shapes as well as in their ornamentation. These wares were grouped into the Late Bronze Age Gáva culture. It was held that the Gáva type ceramics were made on the Plain east of the Tisza during the Hallstatt A-B1 period (KEMENCZEI 1984, 64-72).

Several researchers say that the production of ceramics with channelled decoration passed to Transylvania from the territory of the Gáva culture (LÁSZLÓ 1973, 605-; RUSU 1973, 105-). The same is the situation concerning the Prut-Dniester area (Goligard, Kišinev, Gránicești groups: MELJUKOVA 1961, 35-; SMIRNOVA 1974, 359-; *ibid.*, 1976, 18-; KRUŠELNICKA 1976; 25-; *ibid.*, 1985, 40-; LAPUŠNJAN 1979, 62-; LÁSZLÓ 1986, 149-), the Banat and the Serbia reaches of the Danube (Susani-Bobda, Belegiš, Kalakača groups: GARAŠNIN 1973, 637-; TASIĆ 1974, 662-; TODORVIĆ 1977, 146; FOLTINY 1985, 111-; CHICIDEANU 1986, 47; MEDOVIĆ 1988, 447-; *ibid.*, 1988-89, 57) and also Southeast Poland (BAZILIECH 1982, 92-, 106; *ibid.*, 1984, 347-).

Researches carried out in the last few years seem to suggest that it was not the middle and upper reach of the Tisza where ceramics with channelled and wart decoration were first produced in the Carpathian Basin. This style appeared parallelly in several areas. In the Upper-Tisza area some pottery types of the earlier Berkesz and Felsőszöcs cultures were decorated with the new motives (KACSÓ 1975, 63. fig. 13; Lapus/Oláhlápos). In the Middle-Tisza region, the Rákóczi-falva, the Tumulus and the Hajdúbogos cultures display the most significant antecedents of the Gáva pottery. Such are urns with channelled and wart ornamentation, pots with incised linear decoration, deep bowls with everted rims, cups with high handles (KOVÁCS 1970, 29. fig. 1, 18, 20, 22, fig. 2, 1, 9, 16; *ibid.*, 1975, fig. 11, 126/1; *ibid.*, 1981, 89, fig. 1.2; KACSÓ 1987, 71; NÉMETHI 1990, 53). The pottery find from Debrecen is a fine example of the transition between the ceramics of the two periods (POROSZLAI 1985, 78-). Finds from the eastern edge of the Plain, in the valley of the Körös rivers, which are in many respects similar to the pottery of the Gáva culture, are called Igriča culture (EMÓDI 1980, 229-; CHIDIOSAN-EMÓDI 1983, 17-; *ibid.*, 1982, 61-). Although the vessels are decorated with channels and some shapes are also similar, they cannot be grouped into the Gáva culture for lack of the characteristic incised pattern. The find materials of Susani-Bobda and Belegiš cultures described from south of the Maros, also contain pottery with channelled decoration similar to that of the Gáva culture (STRATAN-

VULPE 1977, 46-). The vessels of the Kalakača culture along the Sarmatian, Serbian reaches of the Danube are highly similar to those of the Gáva culture with incised pattern. Since in this area there are no antecedents of these wares, their production must have been taken over from the Gáva culture (MEDOVIĆ 1988, 447-). The ceramics of the Kalakača group as a whole, however, does not belong to the pottery style of the Gáva culture.

From among the ceramic finds at Gyoma, a piece with everted rims, ornamented with curved, wavy channelling on the shoulder (Fig. 4, 2.3, fig. 5, 2.3) has analogues in the find material of the Gáva culture (KEMENCZEI 1984, Pl. 132, 1; 134, 12; Tiszavasvári, Tiszakeszi). Another vessel from Gyoma also similar, here, however, there is a horizontal channelled decoration on the shoulder under the neck (fig. 4.4, fig. 5.4). Urns with such shapes and decoration were found in the cemetery of the Gáva culture at Taktabáj (KEMENCZEI 1984, pl. 158, 11; 159, 1; 160, 9). Exact analogues are known from the Iron Gate, from the urn graves excavated at Mala Vrbica (VUKMANOVIĆ 1983, 43, fig. 5). They can be dated by the help of two fibula forms. At Taktabáj, one of the burials contained a fibula with bow-plate (KEMENCZEI 1984, Pl. 160, 18). These fibulas were spread during the Hallstatt A1 and they still existed during the Hallstatt B1 period (BADER 1983, 31). Early pieces have been found, for example, at Kurd, Lengyeltóti and Tállya (MOZSOLICS 1985a, Pl. 25, 6; 108, 7; 164, 7), while pieces dated from the Hallstatt B1 period have been found at Egyek and at Debrecen-Látókép (KEMENCZEI 1984, pl. 192, 30; 193, 9). In Moldova, in the region of the Kišinev group, a fibula with bow-plate was found together with a antennae hilted sword at site Valja Rusuluj (MELJUKOVA 1961, 49; fig. 18.6). Another fibula of the same type has been found at Sanislău/Szaniszlő in the eastern part of the Plain from a cemetery of the Gáva culture (NÉMETHI 1981-82, fig. 17.2). The piece from Taktabáj is dated to the later phase of the fibula fashion as attested by the pottery from the grave. The bulgy urns with funnel shaped neck cannot be found in the pottery finds of the early Gáva style. The same is proved by the ceramics of the Nagyálló settlement where no such pottery has been identified. The bronze hoard discovered in the site dates the settlement to the Hallstatt A1 period (KEMENCZEI 1982, 77-).

Urn very similar to the above mentioned wares from Gyoma and Taktabáj have been found in the first urn grave at Mala Vrbica together with a Pechiera type bronze fibula (VUKMANOVIĆ 1983, 83; fig. 1.2.5.). This fibula type was spread during the Hallstatt A period and survived to the Hallstatt B1 (BADER 1983, 21; PETRESCU-DÎMBOVIȚA

1977, Pl. 358, 5–170. The hoard from Cernatu/Csernátfa in Transylvania contained iron implements just as well as bronze fibulas of this type, i. e. it came from the second half of the Hallstatt B period (SZÉKELY 1966, 211, fig. 2.3; LÁSZLÓ 1977, 60). Accordingly, the fibula finds prove that the urns with funnel shaped neck from Taktabáj and also from Gyoma were produced during the second phase of the Gáva culture.

The garland and the wavy channelled decorational pattern on three urn shaped vessels at Gyoma (fig. 4, 1–3; 5, 1–3) can be found in the eastern part of the Carpathian Basin, on the pottery of all the above mentioned cultures. The pattern was equally applied on urns, pots, bowls, cups. The origin of the decoration goes back to the Middle Bronze Age of the Plain (BÓNA 1982, 235, Pl. 35,1; 36, 11; 38, 5; MÁTHÉ 1988, Pl. 4, 6,7; 22, 3–6). Latermit can be observed in the circle of the Tumulus culture. During the Hallstatt A period, it is generally widespread in the ceramics of various cultures. One of the most characteristic finds of pottery decorated with this motif has been found in the Susani barrow in the Bánát (STRATAN-VULPE 1977, Pl. 5–9).

A formal characteristic of one of the Gyoma finds decorated with channelled garland pattern (fig. 4, 1; 5, 1) is the obliquely channelled shoulder. Vessels with similar shoulders can be found in the Carpathian Basin in the Gáva (KEMENCZEI 1984, P. 133, 14; 161, 14; Bodrogkeresztúr, Taktabáj), the Susani–Bobda, Cruceci (PETRESCU–DÎMBOVIȚA 1977, Pl. 35, 1; 169, 8; Pecica/Pécska, Cornuțel; STRATAN–VULPE 1977, Pl. 6, 94; Susani/Bégaszuszány), the Belegiš (TODOROVIĆ 1977, fig. 9.10, 12; FOLTINY 1985, 114, fig. 2, 4–8; MEDOVIĆ 1988–89, 49. Pl. 1, 1–6; 2, 1,2,6,7) and in the Reci–Mediaș cultures (SZÉKELY 1966, 47, Pl. 2,3; 4, 1–2; Reci/Réty; FOLTINY 1968, 343, fig. 2,4, 8,10; Tigrua Mureș/Marosvásárhely) as well. The earliest occurrence can be dated to the R BD period. The urn of the Cornutel bronze find is of the same age. This find, however, was also dated to the Hallstatt A1 period based on a mace-headed pin (HÄNSEL 1976, 64), nevertheless, such pins are known from the Central Danubian Basin also from earlier periods (NOVOTNA 1980, 142; KEMENCZEI 1989, 84, fig. 9, 19). An urn with a similar shoulder decoration can be dated to the R BD with the help of a bronze dagger, both found in an urn grave excavated at Vojilovica in Voivodina (MEDOVIĆ 1988–89, 50, Pl. 2, 5–6). Urns with narrow, obliquely channelled shoulders were frequently produced in the Carpathian Basin during the Hallstatt A period, and also in the Hallstatt B. The Gyoma piece is a formal variant having long upper part with convex sides and a truncated cone shaped base. The nearest analogues can be found along the Tisza at Bodrogkeresztúr (KEMENCZEI 1984, Pl. 133, 14), in Transylvania at Reci (SZÉKELY 1966, 47. Pl. 2,3; 4, 1–2) at the Prut

at Magala (SMIRNOVA 1965, 20 fig. 2,3). The Reci pottery was dated, based on their being similar to the urns from Cırna, to the end of the R BD and the beginning of the Hallstatt A period (HÄNSEL 1976, 93). This argument, however, cannot be excepted, since the Cırna culture lived on the Lower Danube, consequently its urn types could not serve as antecedents for this pottery type. So there is no reason to suppose that the Reci type finds would have been older than ceramics unearthed at site Mediaș/Medgyes in Transylvania (ZAHARIA 1965, 83–). On the contrary, the wares from Reci, and also from Gyoma, reflect the style of the later period of the channelled ceramics in the Tisza region and in Transylvania.

During the Late Bronze Age, all the cultures produced flower-pot shaped pots with knob decoration at the edge, like the vessel at Gyoma (fig. 4,6; 5,6). From the Gáva culture some examples may be mentioned from Poroszló, Nagykálló, Prügy, Somotor/Szomotor (PATAY 1976, 195, fig. 2,5; KEMENCZEI 1982, 79. fig. 4,5; 8,4; *ibid.*, 1984, Pl. 150, 20; DEMETEROVÁ 1986, 121. Pl. 4, 14; 5,7).

Two vessels from Gyoma are too fragmentary to tell their shapes. One might have been an urn shaped vessel with funnel shaped neck (fig. 4, 5; 5, 5), the other was a single-handled jug (fig. 4, 7; 5, 7).

The enlisted analogues allow to group the Gyoma finds into the Gáva culture. The site is situated at the southeastern part of the occupation area of the Gáva culture, bordered by regions of the Igrîța, Susani–Bobda, Belegiš cultures. The Late Bronze Age ceramics found in the southern part of the Plain demonstrates the mutual contacts of these cultures. The similar ceramics of the various areas formed from the local Middle Bronze Age, early Late Bronze Age pottery style which also borrowed pottery forms and decorative patterns from the region of the late Tumulus – early Urnfield culture (Csorva group) west of the Tisza (TROGMAYER 1963, 85–; KEMENCZEI 1975, 54–). This pottery style formed during the R BD period its classical phase can be dated from the Hallstatt A period. This was the period when the practice of the production of ceramics with channelled decoration generally spread in the eastern part of the Carpathian Basin and from there further to the east and to the south. In this period the most common vessel type was the urn shaped ware with truncated cone shaped neck. Based on their shape, the Gyoma finds belong to that period of the Gáva ceramics when some urn shaped vessels were furnished with funnel shaped neck. As attested by finds from the urn grave cemetery at Taktabáj, these products were characteristic even in the first half of the Hallstatt B period. This pottery style was present on the Plain during the whole of the Hallstatt B period, as it is demonstrated by finds from the Mezőcsát and Doroslovo/Doroszló cemeteries (PATEK 1982, 32, fig. 17, 23, 31, 41, 42; TRAJKOVIĆ 1977, 33. fig. 4.).

The formal antecedent of the Gyoma urn shaped vessel with highly flaring neck is the pottery of the bronze find from Tállya dated to the Hallstatt A1 (KEMENCZEI 1984, Pl. 187, 1) while its exact analogues are known from the urn grave cemetery at Tátabáj. Consequently, the ceramic find from Gyoma must have been buried during the Ha A2 – Ha B1 periods.

Concerning the cultural grouping and dating of the Gyoma pottery find, another opinion should also be mentioned. According to it, the Gáva culture is contemporary with the Kurd hoard horizon, i. e. it can be dated from the middle of the Hallstatt A period. It would mean that there are no data proving that the Gáva type ceramics would have been found together with any bronze object younger than that (MOZSOLICS 1985b, 177). This, however, is not so. The bronze objects provide a firm base for dating the Gáva type ceramics (KEMENCZEI 1982, 89, fig. 10, 7–15; Nagykálló; *ibid.*, 1984, Pl. 187, 1: Tállya; *ibid.*, 1981, 151, Pl. 1–6; MOZSOLICS 1985 a, Pl. 158, 1: Vajdácská; KOVALOVSKZI 1989, 122, fig. 2–5: Doboz). The hoard from Piricse also belongs here. It was found in a vessel with incised wavy pattern. Only a fragment of the pottery had been handed in the Nyíregyháza Museum and even that has been lost some decades ago. A. Jósa has put the following note at the beginning of the century on the drawing of the finds: Bruchteil des irdenen Gefäßes, welches den Fund enthielt" (JÓSA-KEMENCZEI 1963–64, Taf. 48, 28). So it cannot be proved, stated that the vessel was made on a wheel and came from the Middle Ages (MOZSOLICS 1985b, 177), in turn, it has many analogues in the find materials of the Gáva culture (KEMENCZEI 1984, 71). A. Jósa has also published a fragment of the pottery containing the Nyírtura hoard. It was a sherd with wavy pattern dated from the Hallstatt B1 period. He did not write that it would have been found lying next to the bronze objects (MOZSOLICS 1985b, 177), but as it can be read on the Plate: Bruchteil des irdenen Gefäßes, welches den Fund enthielt" (JÓSA-KEMENCZEI 1963–64, Pl. 61, 18). It is not only the Nyírtura hoard which enables the definition and dating of the second half of the Gáva culture but also a mould of a socketed axe found in the Poroszló settlement. It represents a type characteristic of the Hallstatt A2–B1 period (PATAY 1966, 198, fig. 4.2). It is also mistaken that the stratigraphical situation of the find is unknown (MOZSOLICS 1985b, 177). On the contrary, it is known that the mould was unearthed in the II/s pit of the settlement, together with characteristic Gáva pottery, like sherds with channelled wart decoration, incised linear pattern, smoothed, channelled, turban shaped decoration (Hungarian National Museum Inv. No.: 71.1.1070–1094). Their contemporaneity cannot be doubted. Another mistaken statement is that the Tátabáj cemetery would not belong to the Gáva culture (MOZSOLICS 1985b, 177), since

among the finds there are pieces with channelled wart decoration and incised linear pattern characteristic of the settlement ceramics of the Gáva culture (KEMENCZEI 1984, Pl. 158, 12; 159, 4; 160, 14). The same is underlined by the Gyoma pottery find itself where beside the ceramics made in the characteristic Gáva style (fig. 4, 1–3; 5, 1–3) there is also a piece similar to the Tátabáj urns (fig. 4.4; 5.4). The bronze hoard from Debrecen–Dombostanya, dated to the Hallstatt A2–B1 period was also found in a vessel of identical shape (KEMENCZEI 1984, Pl. 191, 1–11; MOZSOLICS 1985a, Pl. 264–268; 272,7). Furthermore, Gáva type wares have also been found together with bronze objects dated from the second half of the Hallstatt B period. For example, the third grave excavated at Füzesabony–Öregdomb contained an urn shaped Gáva type vessel with channelled, wart ornamentation and bronze bits and faleras (KEMENCZEI 1989, 61, fig. 4, 1–2, 4–6, 8–10), or the urn burial from Zemplin/Zemplén with Gáva type pottery and an iron knife and an iron ring (GAŠAJ 1988, 265, fig. 1, 1–4). These latter came really from after the disintegration of the Gáva culture, still they demonstrate that Gáva type ceramics survived after the middle of the Hallstatt A period. It has expressly been proved that there was no dramatic change in the ceramic production during the Hallstatt A and B periods (HÄNSEL 1976, 95; MEDOVIĆ 1988, 451–). All the above facts ascertain that the Gáva culture existed after the middle of the Hallstatt A period, i. e. the Gyoma pottery find is rightly grouped into the Gáva culture.

It cannot be told why the Gyoma wares were buried. The practice of burying more than one vessels together started in Central and Southeast Europe in the Middle Bronze Age (EIBNER 1969, 19–; KOVÁCS 1978, 221; STRATAN–VULPE 1977, 46). Similar pottery finds have been known from the region of the Gáva culture. To this group belong the two finds from Debrecen–Haláppuszta, both consisting of cups (KEMENCZEI 1984, 25) and the find groups from Battonya and Debrecen containing various vessels. (SZ. KÁLLAY 1986, 160–; POROSZLAI 1985, 78–). A pottery hoard was unearthed at the Tisza at Igrici, near the Gáva region. It belonged to the Urnfield culture – Csorva group (HELLEBRANDT 1990). In the Banat, the vessels from the Susani barrow belong into this group (STRATAN–VULPE 1977, Pl. 5–15). These finds may be objects buried as a part of a cult or a sacrifice, although it is also possible that they were separately kept, stored goods of some potters or tradesmen. The Gyoma find, regarding the few items it contained, seems to have belonged to the first category. It means that the finds not only help the dating of the Gáva culture but also indicate that burial of sacrificial pottery made part of the cultic practice of the Late Bronze Age population in the eastern part of the Plain.

BIBLIOGRAPHY

- BADER 1983
BAZIELICH 1982
- BADER, *Die Fibeln in Rumänien*. PBF XIV, 6. München 1983
M. BAZIELICH, *Materiały kultury Łużickiej i kultury Gáva ze stanowiska 22 w Zestawicach-Dłubni (Kraków-Nowa Huta). – Lusitanian culture and Gáva culture materials from site 22 at Zestawice-Dłubnia (Cracow-Nowa Huta)*. WiA 47 (1982) 71–106.
- BAZIELICH 1984
M. BAZIELICH, *Elementy kultury Gáva w rejonie Krakowa-Nowej Huty. – Elements of the Gáva culture in the area of Cracow-Nowa Huta*. A Polski 29 (1984) 317–349.
- BÓNA-NOVÁKI 1982
I. BÓNA-GY. NOVÁKI, *Alpár bronzkori és Árpád-kori vára. – Alpár – eine bronzezeitliche und mittelalterliche Burg*. Cumania 7 (1982) 17–268.
- CHICIDEANU 1986
I. CHICIDEANU, *Die frühtrakische Kultur zur Bronzezeit in Südwest Rumänien*. Dacia 30 (1986) 7–47.
- CHIDIOȘAN-EMÓDI 1982
N. CHIDIOȘAN-I. EMÓDI, *Grupul cultural Igrîța de la sfîrșitul epocii bronzului. – Le groupe culturel d'Igrîța de la fin de l'âge du bronze*. Crisia 12 (1982) 61–86.
- CHIDIOȘAN-EMÓDI 1983
N. CHIDIOȘAN-I. EMÓDI, *Descoperirile arheologice din peștera Izbîndis (comuna Șuncuiuș) aparținînd grupului cultural Igrîța. – Les découvertes archéologiques de la grotte Izbîndis (commune de Șuncuiuș) appartenant au groupe culturel Igrîța*. Crisia 13 (1983) 17–32.
- DEMETROVÁ 1986
S. DEMETROVÁ, *Počiatky gávскеj kultúry na Východnom Slovensku. – Die Anfänge der Gáva-Kultur und der Slowakei*. SlovArch 34 (1986) 97–131.
- EIBNER 1969
C. EIBNER, *Ein mittelbronzezeitlicher Gefäßverwahrungsfund von Schrattenberg p.B. Mistelbach, N. Ö.* ArchAu 46 (1969) 19–52.
- EMÓDI 1980
I. EMÓDI, *Necropola de la sfîrșitul epocii bronzului din peștera Igrîța. – Das spätbronzezeitliche Grabfeld der Igrîța-Höhle*. SCIV 31 (1980) 229–273.
- FOLTINY 1968
S. FOLTINY, *Zum Problem der sogenannten "Pseudo-Protovillanova urnen"*. Origni 2 (1968) 33–356.
- FOLTINY 1985
S. FOLTINY, *Zur urnenfelderzeitlichen Keramik im Banat*. WABl 71 (1985) 111–120.
- GARAȘANIN 1973
M. GARAȘANIN, *Praistorija na tlu SR Srbije. – La Préhistoire sur le territoire de la République Socialiste de Serbie*. Beograd 1973.
- GAȘAJ 1988
D. GAȘAJ, *Žiarovy hrob z neskorej doby bronzovej až začiatky staršej doby železnej v Zemline. – Das Urnengrab aus der Spätbronzezeit bis zum Anfang der älteren Eisenzeit in Zemlin*. HCK 5 (1988) 261–269.
- HÄNSEL 1976
B. HÄNSEL, *Beiträge zur regionalen und chronologischen Gliederung der älteren Hallstattzeit an der unteren Donau*. Bonn 1976.
- HELLEBRANDT 1990
M. HELLEBRANDT, *Az igrici kerámiadepot. Der Gefäßfund von Igrici*. ComArchHung 1990.
- JÓSA-KEMENCZEI 1963–64
A. JÓSA-T. KEMENCZEI, *Bronzkori halmazleletek. – Depotfunde aus der Bronzezeit*. JAMÉ 6–7 (1963–64) 19–45.
- KACSÓ 1975
C. KACSÓ, *Contributions á la connaissance de la culture de Suciu de Sus á la lumière des recherches faites á Lâpus*. Dacia 19 (1975) 45–68.
- KACSÓ 1987
C. KACSÓ, *Beiträge zur Kenntnis des Verbreitungsgebietes und der Chronologie der Suciu de Sus-Kultur*. Dacia 31 (1987) 51–75.
- KEMENCZEI 1975
T. KEMENCZEI, *Zur Verbreitung der spätbronzezeitlichen Urnenfelderkultur östlich der Donau*. FolArch 26 (1975) 45–70.
- KEMENCZEI 1981
T. KEMENCZEI, *Der Bronzefund von Vajdácska*. In: Festschrift für W. A. v. Brunn. 151–161. Mainz 1981.
- KEMENCZEI 1982
T. KEMENCZEI, *Die Siedlungsfunde der Gáva-Kultur aus Nagykálló*. FolArch 33 (1982) 73–95.
- KEMENCZEI 1984
T. KEMENCZEI, *Die Spätbronzezeit Nordostungarns*. Budapest 1984.
- KEMENCZEI 1989a
T. KEMENCZEI, *Bemerkungen zur Chronologie der spätbronzezeitlichen Grabfunde im Donau-Theiß Zwischenstromgebiet*. ComArchHung 1989, 73–96.

- KEMENCZEI 1989b T. KEMENCZEI, *Koravaskori sírletek az Alföldről az Óskori Gyűjteményben. – Grabfunde der Früheisenzeit von der Tiefebene in der Prähistorischen Sammlung.* FolArch 40 (1989) 55–74.
- KOVÁCS 1970 T. KOVÁCS, *A hajdúbagosi bronzkori temető. – Bronze Age cemetery at Hajdúbagos.* FolArch 21 (1970) 27–47.
- KOVÁCS 1975 T. KOVÁCS, *Tumulus culture cemeteries of Tiszafüred.* RégFüz Ser. II, 17 (1975).
- KOVÁCS 1978 T. KOVÁCS, *Középső bronzkori edénylelet Mogyoródról. – Mittelbronzezeitlicher Gefäßfund aus Mogyoród.* ArchÉrt 103 (1978) 217–222.
- KOVÁCS 1981 T. KOVÁCS, *Zur Problematik der Entstehung der Hügelgräber in Ungarn.* SlovArch 29 (1981) 87–96.
- KOVALOVSZKI 1989 J. KOVALOVSZKI, *Doboz történetének vázlata a legrégebb időktől a középkor végéig.* In: Doboz tanulmányok, 115–147. Békéscsaba 1989.
- KRUŠELNICKA 1976 KRUŠELNICKA, *Pivnične Prikarpattja i Zacidna Volin' za dobi rann'ogo zaliza.* Kiev 1976.
- KRUŠELNICKA 1985 L. I. KRUŠELNICKA, *Vzaemoz'jazki naseleennja Prikarpattja i Volini z plemenami Schidnoj i Central'noj Evropi.* Kiev 1985.
- LAPUŠNJAN 1979 V. L. LAPUŠNJAN, *Rannie frakijcy X – načala IV. v. do n. e. v lesostepnoj Moldavii.* Kišinev 1979.
- LÁSZLÓ 1973 A. LÁSZLÓ, *Considerații asupra ceramicii de tip Gáva din hallstattul timpuriu. – Betrachtungen über die Keramik vom Typ Gáva der frühen Hallstattzeit.* SCIV 24 (1973) 575–609.
- LÁSZLÓ 1977 A. LÁSZLÓ, *Anfänge der Benutzung und Bearbeitung des Eisens auf dem Gebiet Rumäniens.* Acta ArchHung 29 (1977) 53–75.
- LÁSZLÓ 1986 A. LÁSZLÓ, *Zu den Beziehungen zwischen der Oberen Theigegegend und dem nordöstlichen aussenkarpatischen Raum in der älteren Hallstattzeit. Eine neue Gruppe der Gáva-Holihrady Kultur in der Suceava-Hoheebene.* In: Hallstatt Kolloquium Veszprém 1984. 149–163. Budapest 1986.
- MÁTHÉ 1988 M. SZ. MÁTÉ, *Bronze Age tells in Berettyó valley.* In: Bronze Age settlements of the Great Hungarian Plain I. 27–122. Budapest 1988.
- MEDOVIĆ 1988 P. MEDOVIĆ, *Kalakačka. Naselje ranog gvozdenog doba. – Die früheisenzeitliche siedlung Kalakačka.* Novi Sad 1988.
- MEDOVIĆ 1988–89 P. MEDOVIĆ, *Kanelovana keremika prelaznog perioda u Vojvodini. – Kanelierte Keramik der Übergangsperiode in der Wojwodina.* RVM 31 (1988–89) 45–57.
- MELJUKOVA 1961 A. I. MELJUKOVA, *Kultury predskifskogo perioda v lesostepnoj Moldavii.* MIA 96 (1961) 5–52.
- MOZSOLICS 1985a A. MOZSOLICS, *Bronzefunde aus Ungarn.* Budapest 1985.
- MOZSOLICS 1985b A. MOZSOLICS, *Probleme der mittleren, Jung und Spätbronzezeit Nordostungarns.* ARegia 22 (1985) 175–178.
- NÉMETI 1981–82 I. NÉMETI, *Descoperiri de la inceputul hallstattului în zona Careiului. – Entdeckungen vom Beginn der Hallstattzeit in der Gegend um Carei.* StCom Satu Mare 5–6 (1981–82) 45–58.
- NÉMETI 1990 I. NÉMETI, *Contribuții la cunoașterea sferșitului epoci bronzului din nord-vestul României. – Beiträge zur Erforschung der Spätbronzezeit in Nordwestrumänien.* SCIV 41 (1990) 19–54.
- NOVOTNÁ 1980 M. NOVOTNÁ, *Die Nadeln in der Slowakei.* PBF XIII, 6. München 1980.
- PATAY 1976 P. PATAY, *Vorbericht über die Ausgrabungen zu Poroszló–Aponhát.* FolArch 27 (1976) 193–201.
- PATEK 1982 E. PATEK, *Recent excavations at the Hallstatt and La Tène hill-fort of Sopron–Várhely (Burgstall) and the predecessors of the Hallstatt culture in Hungary.* BAR Int.Ser. 144 (1982) 1–56.
- PETRESCU-DÎMBOVIȚA 1977 PETRESCU-DÎMBOVIȚA, *Depozitele de bronzuri din România.* București 1977.
- POROSZLAI 1985 I. POROSZLAI, *Későbronzkori edénydepot lelet Debrecenből. – Gefäß-Depot aus der Spätbronzezeit, ein Fund aus Debrecen.* DMÉ 1982, 75–100.
- RUSU 1973 M. RUSU, *Considérations sur quelques problèmes de l'époque hallstattienne de Transylvanie.* Actes de VIIIe Congrès ISPP II. 105–112. Beograd 1973.

- SMIRNOVA 1974
 SMIRNOVA 1975
 STRATAN-VULPE 1977
 SZÉKELY 1966
 SZ. KÁLLAY 1986
 TASIĆ 1974
 TODOROVIC 1977
 TRAJKOVIĆ 1977
 TROGMAYER 1963
 VUKMANOVIĆ 1983
 ZAHARIA 1965
- G. I. SMIRNOVA, *Complexele de tip Gáva-Holihradý – o cumunitate cultural-istriča*. SCIV 25 (1974) 359–380.
 G. I. SMIRNOVA, *Gavsko-Goligradskij krug pamjatnikov Vostočno-kar-patskogo bassejna*. ASGE 17 (1975) 18–34.
 I. STRATAN – A VULPE, *Der Hügel von Susani*. PZ 52 (1977) 28–60.
 Z. SZÉKELY, *Asezári din prima vîrstă a fierului in sud-estul Transilvaniei*. Sf. Gheorghe 1966.
 Á. SZ. KÁLLAY, *Késő bronzkori edénydepot Battonya határában. – Spät-bronzezeitliches Gefäßdepot in der Umgebung von Battonya*. ArcÉrt 11 (1986) 159–165.
 N. TASIĆ, *Praistorija Vojvodine. – Vojvodina in prehistory*. Novi Sad 1974.
 J. TODOROVIĆ, *Praistorijska Karaburma II. – The Prehistoric Karaburma II. The necropolis of the Bronze Age*. Beograd 1977.
 C. TRAJKOVIĆ, *The Hallstatt Cemetery near Doroslovo*. ArchYug 18 (1977) 29–36.
 O. TROGMAYER, *Beiträge zur Spätbronzezeit des südlichen Teils der Ungarischen Tiefebene*. Acta ArchHung 15 (1963) 85–122.
 M. VUKMANOVIĆ, *Novi nalazi fibula tipa "Peschiera" na Berdapu. – New finds of the "Peschiera" fibulas in the Iron Gate*. ZNM 11 (1983) 43–47.
 E. ZAHARIA, *Remarques sur le Hallstatt ancien de Transylvanie*. Dacia 9 (1965) 83–104.

T. Kemenczei
 Magyar Nemzeti Múzeum
 H-1370 Budapest
 Pf. 364

