

Andrea Vaday—Pál Medgyesi

RECTANGULAR VESSELS IN THE SARMATIAN BARBARICUM IN THE CARPATHIAN BASIN

The Sarmatian ceramics found in the Carpathian Basin is of poor ornamentation. The painted vessels, and the vessels having figural ornamentation, both rarely turning up in the 2nd century AD, are imported goods of Pannonian origin (MARÓTI-VADAY 1980). Though the imported relief ornamented terra sigillata are copied by the Barbarian potters, this copying is in most cases limited to the applying of the shape, in those few cases when they imitate the ornamentation, they use the simplest motives in a further simplified form, or apply only certain elements of them. From the 2nd century AD, partly following Celtic traditions, partly applying Dacian elements, the smoothed-in ornamentation, made up of simple geometric motives, appears on the quick wheeled pottery of the Sarmatian settlements and cemeteries. Not only the ceramics is of poor ornamentation, but the other Sarmatian finds as well. The ornamented objects are either Roman imports, or they were made in eastern workshops and were brought by the Sarmatians moving to the left bank of the Danube. Thus figural and floral motives rarely appear in the findmaterial, but they do not become usual among the ornaments. One of the few such examples appearing in certainly local material is the spindle whirl from the cemetery of Csongrád, Határ út, grave Nr.11 (fig. 15, 1 a–e), it is decorated with two schematic horses and two swastika-like carved motives, the latter ones can even be interpreted as tamgas (PÁRDUCZ 1944, 20. XXXII. T. 1 a–c).

From the second half of the 4th century AD changes can be observed in the Barbaricum it is only partially due to the effects of the Cernahov culture.

The fragments of Germanic and Iranian peoples, who were coming from the east, escaping from the Hunnic pressure and settled down in the Carpathian Basin, brought such techniques of pottery, vessel-types and motives of ornamentation that were unknown in this place before and now become adopted and used by local potters as well. This findmaterial (clay kettles, slow wheeled pots and lics, ceramics with more complicated floral and figural ornamentation) differs from the previous one, but appears together with it.

The area of its distribution is first of all the middle Trans-Tisza region, the southern part of the Great Hungarian Plain, the western strip of the Bácság and

the Bácska region. Until the present day we know only one place, Bag-Peres dűlő (VADAY 1980–81a) north of these regions, where such material was found. There are two new sites which supplement this group, not only with the above described late type of material, but also with a new type of vessel, the rectangular vessel.

One of these places is *Sarkad-Körös-hát*, református temető (Calvinist cemetery). Archaeological material was found here during canalisation and grave digging, already in the 1940's (fig. 1a; points A–E show the exact finding places of the below described finds).

In 1945, at a depth of 3–3,5 m a grey, wheeled, one handled jug with a smoothed-in neck was found beside great amounts of ash and charcoal. The vessel had deformed before burning. Rd: 11–12 cm; Bd: 7,2 cm; H: 33,5 cm (Museum of Békéscsaba, Inv.Nr. 58.420.1.; exact finding place fig 1a. point C, fig. 2, 2).

In the 1970's a furnace was destroyed here (fig. 1a. point B; material was not taken to the museum this time).

In 1978 during grave digging a light grey, well kneaded vessel having a triangular base, an upwards lightly widening shape and straight walls was found (fig. 1a. point A). On all the three walls it had different patterns carved before burning. Rd: 8 cm–8,5 cm–8 cm; Bd: 4 cm–4,7 cm–4,4 cm; H: 8 cm. (Museum of Békéscsaba, Inv.Nr. 90.13.1.; fig. 3, fig 4/1–3). The verifying excavation took place in 1990, this was the time when there was an opportunity to define the exact place of finding of the material which come to light previously. The material seems to come from a settlement in 1940 on the other bank of the brook, besides ceramics, animal bones were also found, but since, the collected material was not kept, it is not clear, whether there is a cemetery or a settlement on that territory¹.

Description of the material

1. Grey, wheeled, straight walled *dish* with a groove under its rim. Rd: 14 cm (fig. 5, 1).
2. Grey, wheeled *dish* with a groove under its rim, and with one at the joining of the neck and the body. Its surface is horizontally, densely smoothed on the outside and rather rarely, in stripes on the inside. Rd: 21 cm (fig. 5, 2).

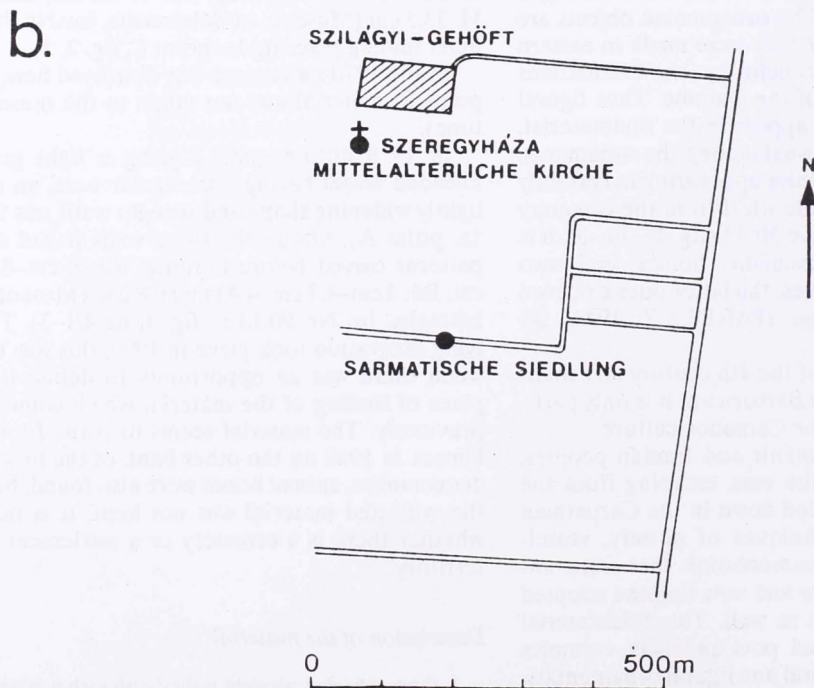
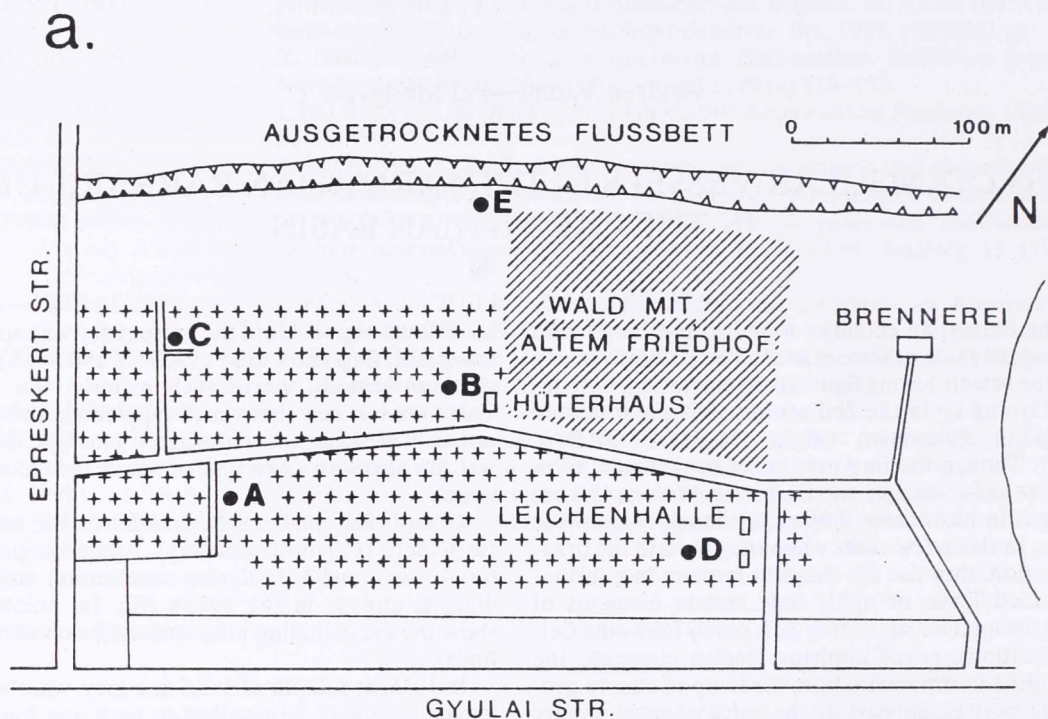
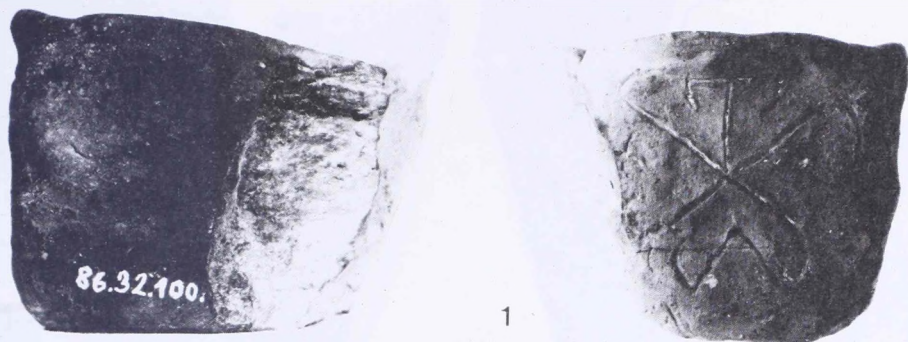
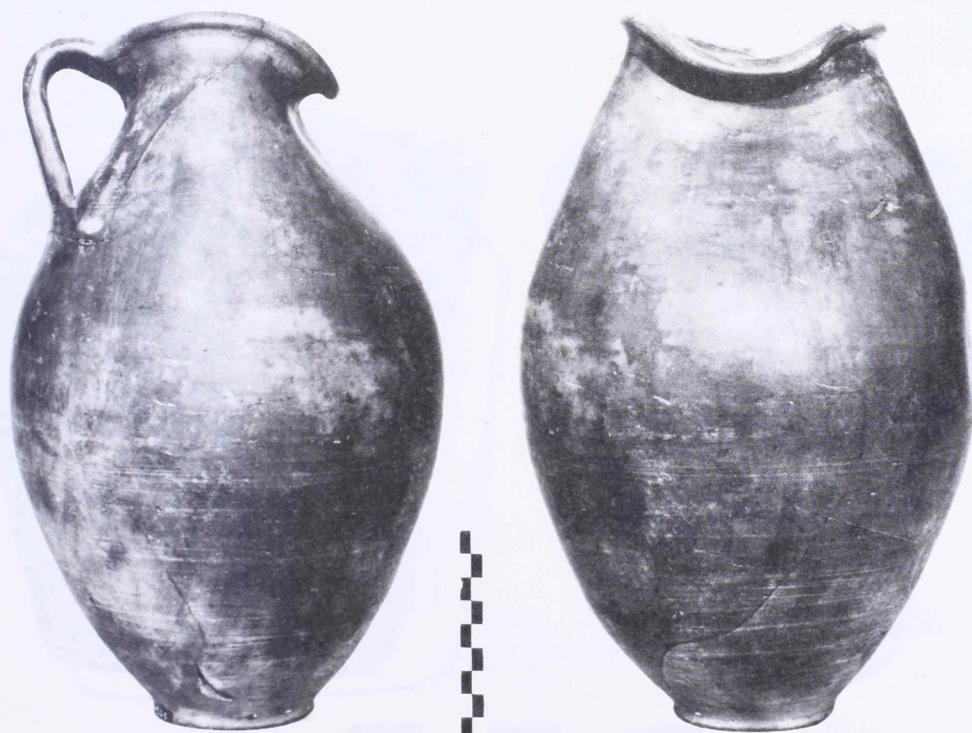


Fig. 1a: Sarkad, Kőrös-hát református temető (Calvinist cemetery), A–D the finding places of certain objects discussed in the text;

b: Gyula-Szeregyháza, csatornapart, position of the medieval church and the Sarmatian furnaces



1



2

Fig. 2 1: Vessel with a tamga, from Gyula-Szeregyháza, csatornapart, 2nd furnace;
2: Jug, deformed before burning, from Sarkad, Kőrös-hát

3. Grey, steep walled *dish* with two horizontal grooves under the rim. Kneaded with glittering material. Rd: 16 cm (fig. 5, 3).

4. Grey, wheeled *dish* with two parallel, horizontal grooves under its rim, and other two on its bulge. The rim and the lower part on the outside is densely, horizontally



Fig. 3 Vessel with carved ornamentation, from Sarkad, Kőrös-hát

smoothed; on the shoulder fields filled with dense smoothed in sloping lines change with unornamented fields. On the inside, the bottom of the dish is horizontally smoothed, the upper part is smoothed vertically and rather rarely. Rd: 21 cm (fig. 5, 4).

5. Light grey, wheeled *dish* with a rib immediately under its bent out rim. Rd: 11,4 cm (fig. 5, 5).

6. Grey, wheeled *dish* with a rib under its thickening rim and a groove on its shoulder. The rim and the shoulder is horizontally smoothed. Rd: 23 cm (fig. 5, 6).

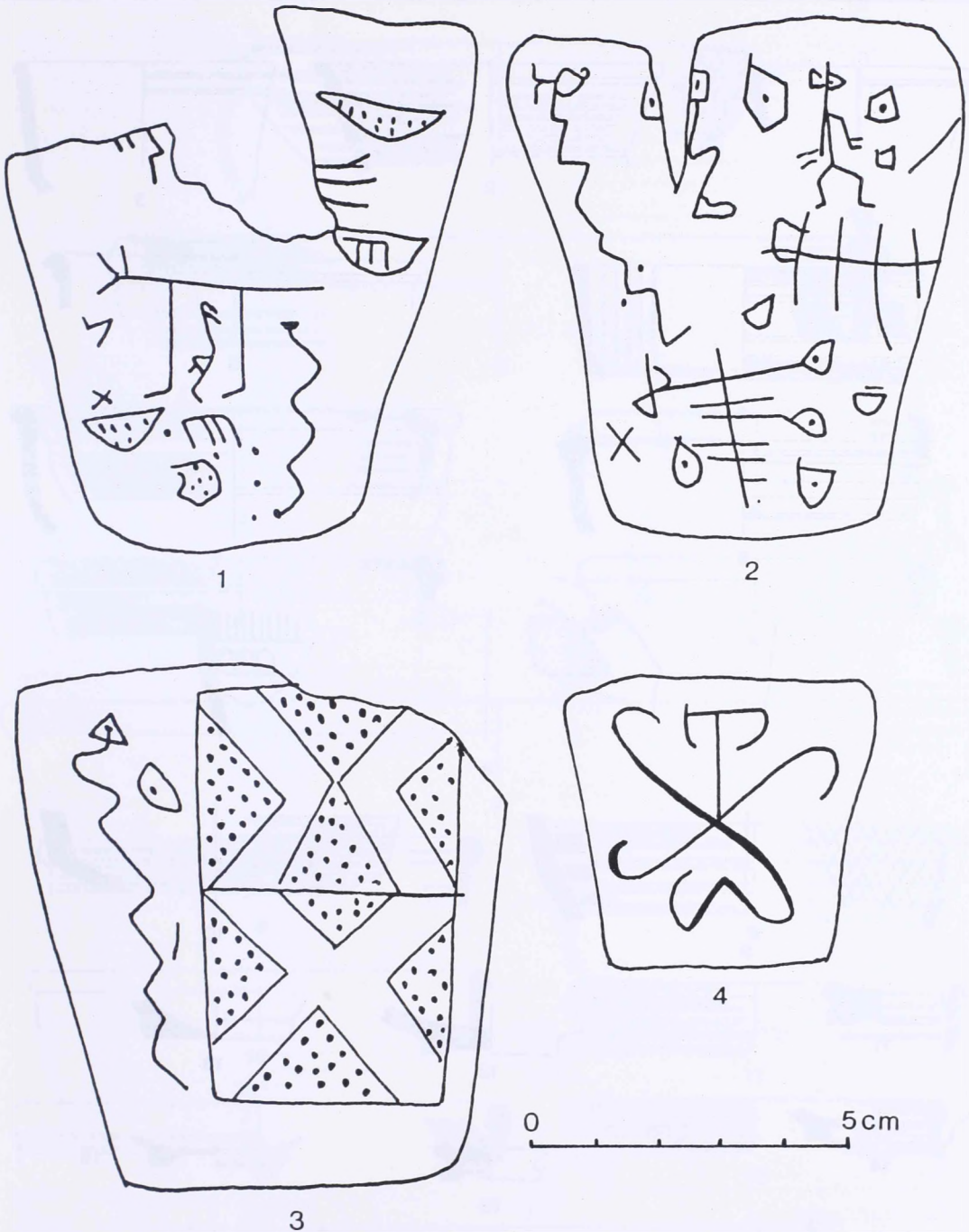


Fig. 4 1–3: Sarkad, Kőrös-hát;
4: Vessel with a tamga, Gyula-Szeregyháza

7. Light grey, wheeled *dish* with a groove above its bulge
Rd: 14 cm (fig. 5, 7).

8. Grey, wheeled *dish* with dense, sloping smoothing on its shoulder on the outside and with a handle, tightly fitted to the body of the vessel. On the inside there are horizontal stripes having smoothed-in ornamented stri-

pes in between. This ornamentation is made up of vertical stripes at the top, and of arc-like motives at the bottom (fig. 5, 8).

9. Grey, wheeled, hemispheric *dish* with smoothed-in sloping grid-like pattern on the outside and horizontal, rather rare, striped smoothing-in on the inside (fig. 5, 9).

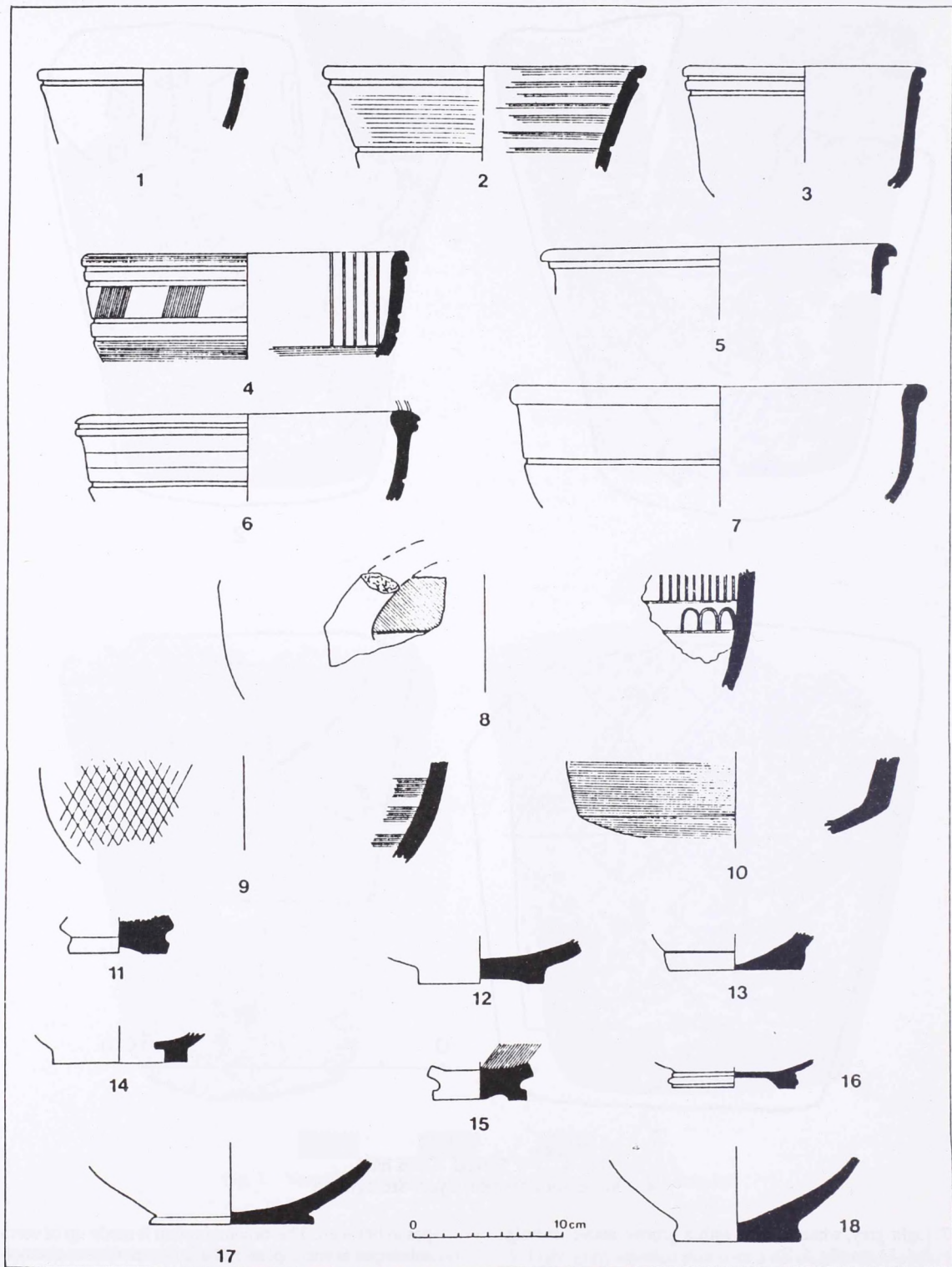


Fig. 5 1-18: Findmaterial from Sarkad, Kőrös-hát

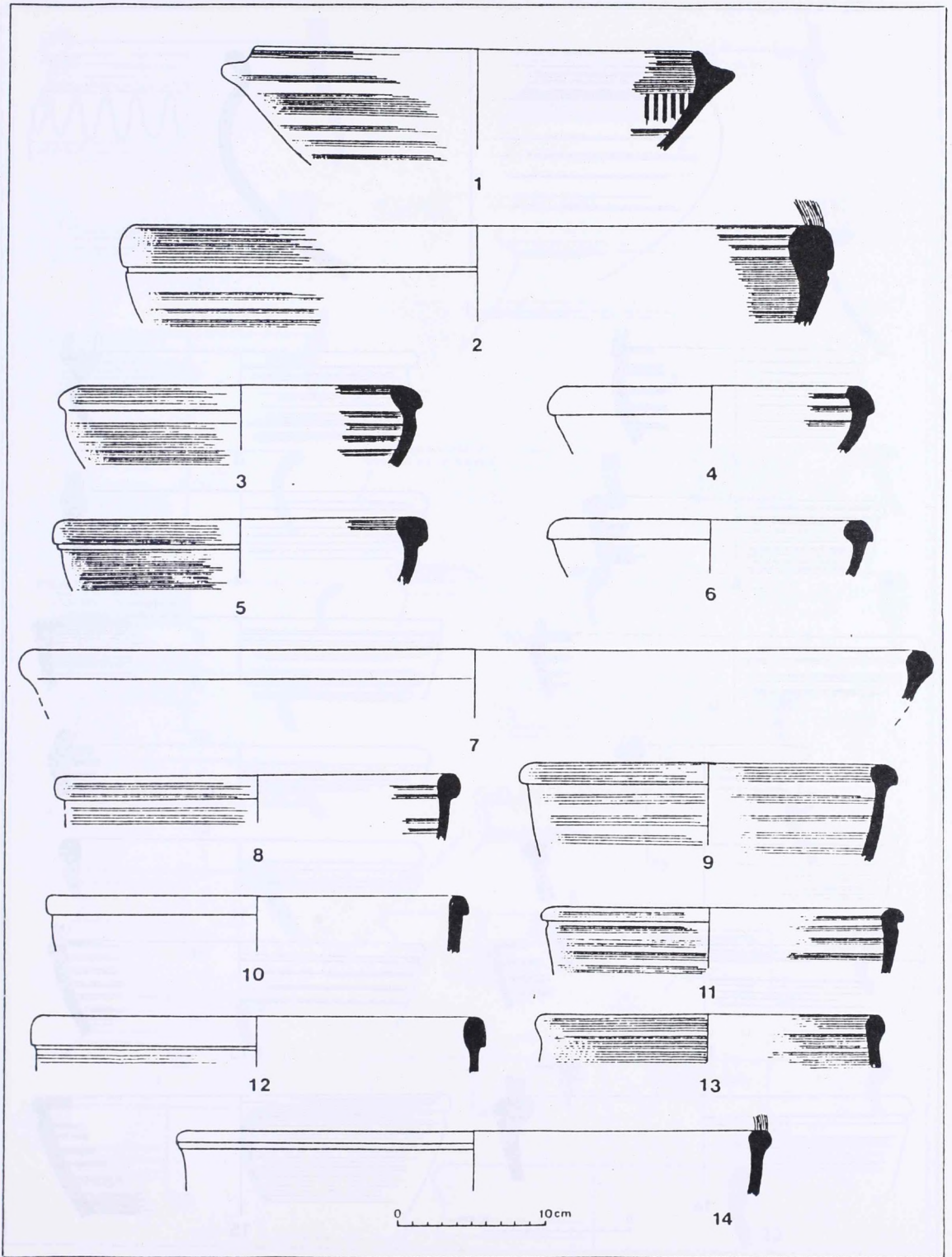


Fig. 6 1-14: Findmaterial from Sarkad, Kőrös-hát

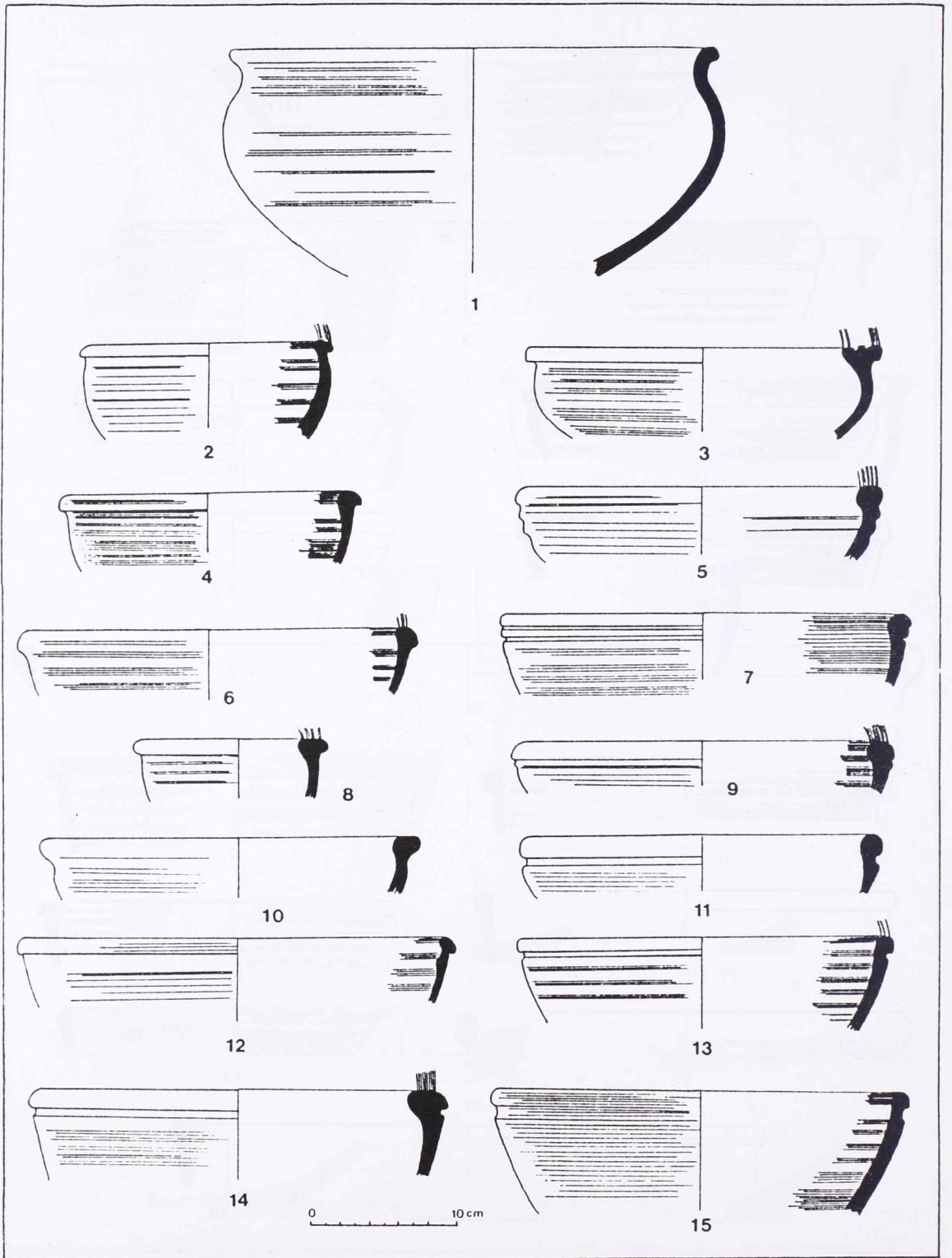


Fig. 7 1-15: Findmaterial from Sarkad, Kőrös-hát

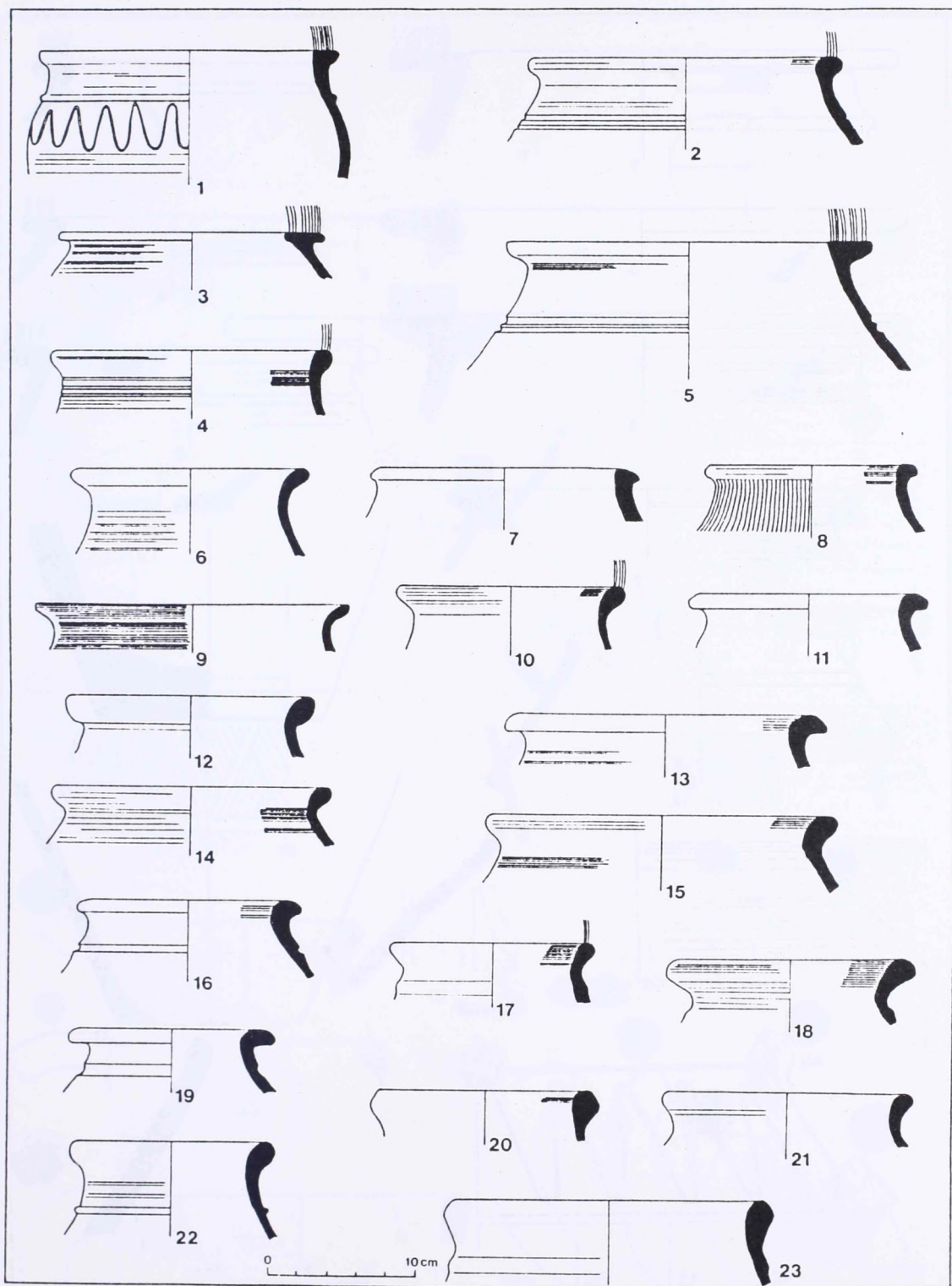


Fig. 8 1-12: Findmaterial from Sarkad, Kőrös-hát

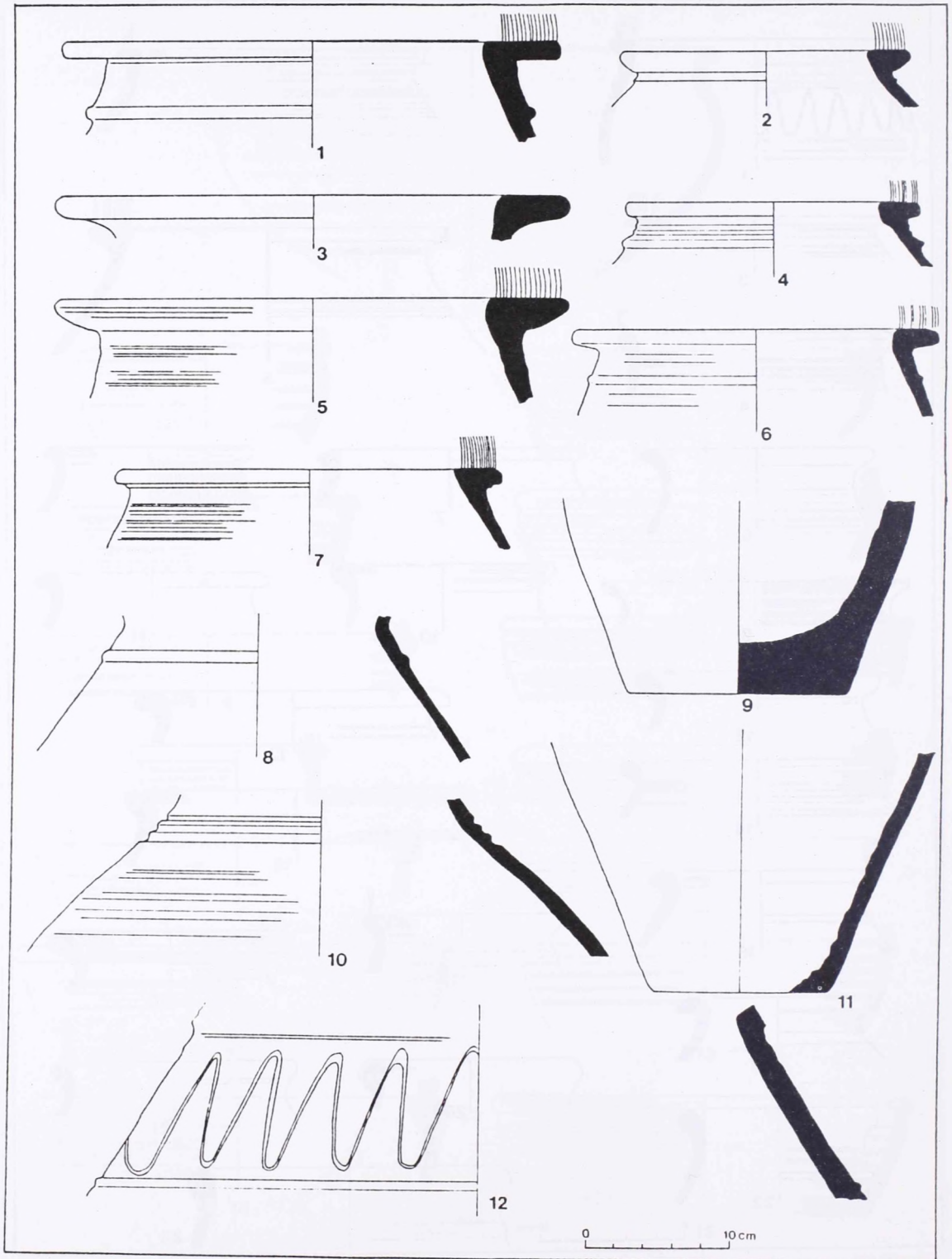


Fig. 9 1-12: Findmaterial from Sarkad, Kőrös-hát

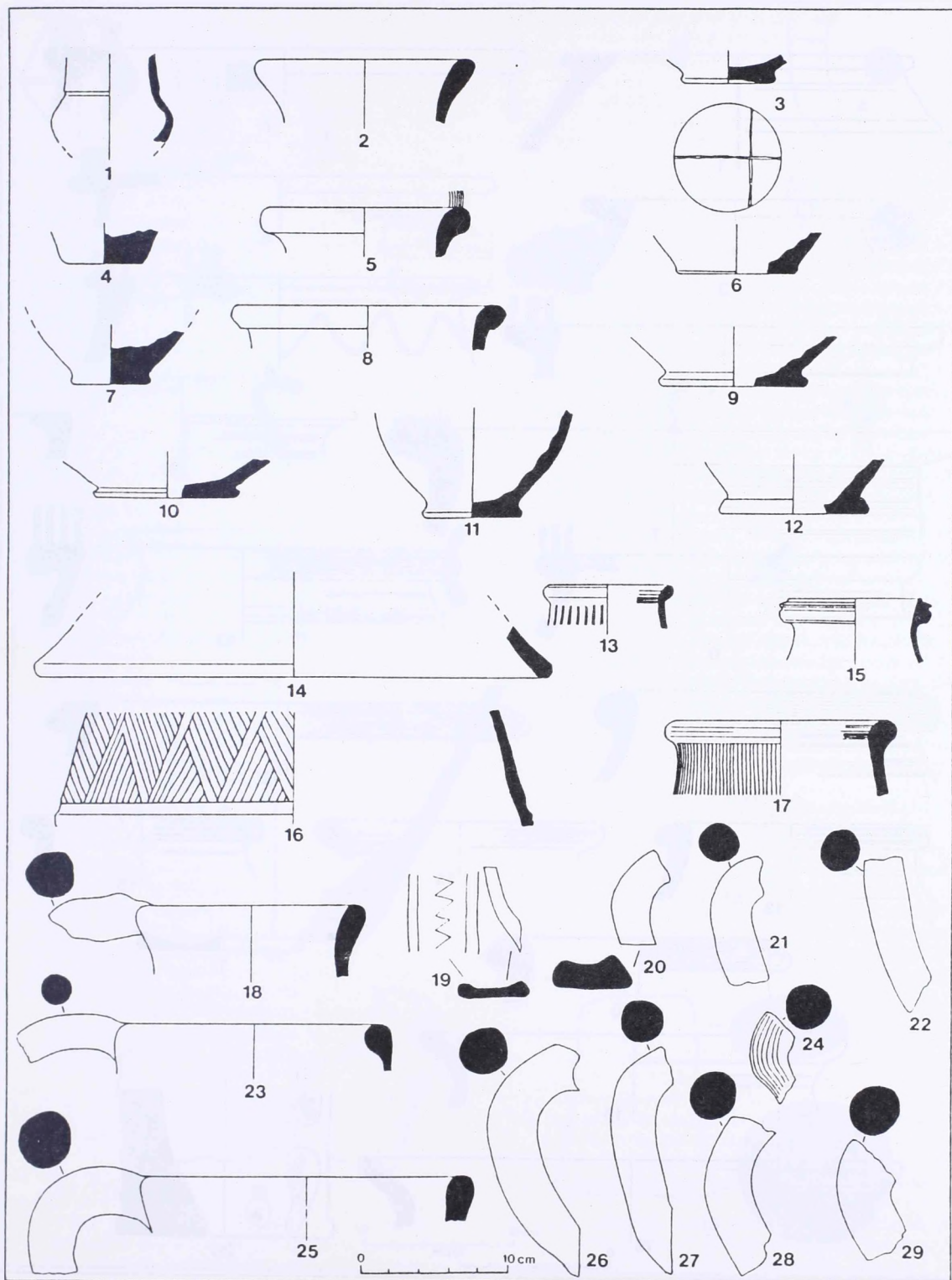


Fig. 10 1-29: Findmaterial from Sarkad, Kőrös-hát

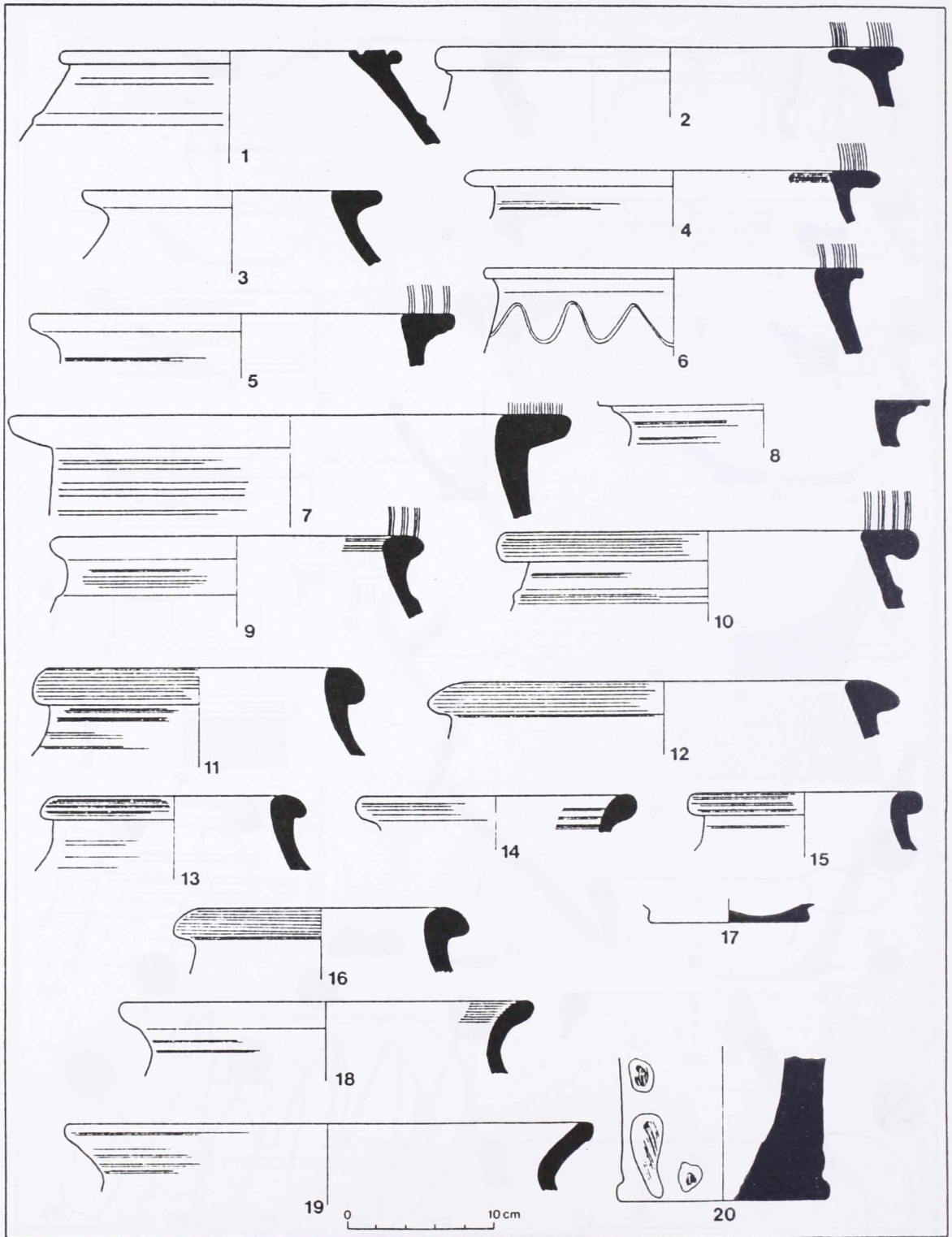


Fig. 11 1-20: Findmaterial from Sarkad, Kőrös-hát

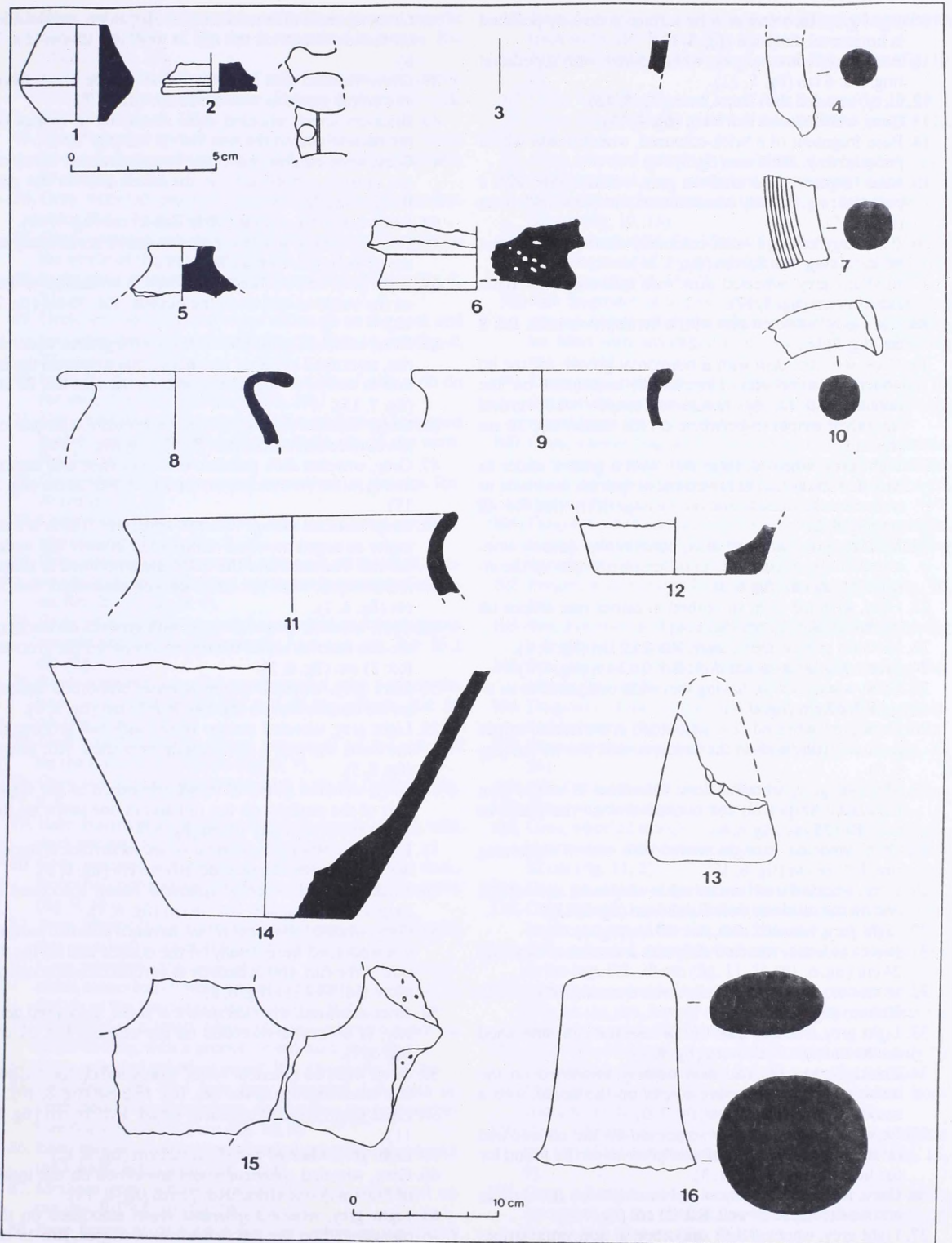


Fig. 12 1-16: Findmaterial from Sarkad, Kőrös-hát

10. Light grey, biconical *dish* its surface is densely polished in horizontal direction (fig. 5, 10).
11. Base fragment of a grey, wheeled *dish* with a pedestal ring. Bd: 6 cm (fig. 5, 11).
12. Grey, wheeled *dish* Bd: 4,2 cm (fig. 5, 12).
13. Grey, wheeled *dish* Bd: 9 cm (fig. 5, 13).
14. Base fragment of a brick-coloured, wheeled *dish* with a pedestal ring. Bd: 9 cm (fig. 5, 14).
15. Base fragment of a medium grey, wheeled *dish* with a pedestal ring, densely smoothed on the inside. Bd: 6 cm (fig. 5, 15).
16. Base fragment of a brick-coloured, wheeled *dish* with a pedestal ring. Bd: 8,2 cm (fig. 5, 16).
17. Medium grey, wheeled *dish* with a hemispheric base. Bd: 10,8 cm (fig. 5, 17).
18. Light grey, wheeled *dish* with a hemispheric base. Bd: 8 cm (fig. 5, 18).
19. Grey, wheeled *dish* with a horizontal groove for the lid under its steep rim. Horizontally smoothed on the outside and having horizontal stripes with vertical smoothed stripes in-between, on the inside. Rd: 30 cm (fig. 6, 1).
20. Light grey, wheeled, large *dish* with a groove under its rim, and smoothed in horizontal stripes on the inside as well as on the outside and on the edge of the rim. Rd: 48 cm (fig. 6, 2).
21. Medium grey, wheeled *dish*, horizontally, densely smoothed on the outside and in rather rare stripes on the inside. Rd: 24 cm (fig. 6, 3).
22. Grey, wheeled *dish*, smoothed in rather rare stripes on the inside. Rd: 21 cm (fig. 6, 4).
23. Medium grey, wheeled *dish*. Rd: 21,2 cm (fig. 6, 6).
24. Medium grey, wheeled *dish*. Rd: 21,2 cm (fig. 6, 6).
25. Grey, wheeled *dish*, having thin walls compared to its size. Rd: 62 cm (fig. 6, 7).
26. Dark-grey, wheeled *dish*, smoothed in horizontal stripes on the outside and on the inside as well. Rd: 27 cm (fig. 6, 8).
27. Medium grey, wheeled *dish*, smoothed in rather rare horizontal stripes on the outside and on the inside as well. Rd: 25 cm (fig. 6, 9).
28. Grey, wheeled, straight walled *dish* with a thickening rim. Rd: 28 cm (fig. 6, 10).
29. Grey, wheeled *dish* smoothed in stripes on the outside and on the inside as well. Rd: 26 cm (fig. 6, 11).
30. Light grey, wheeled *dish*. Rd: 30 cm (fig. 6, 12).
31. Brick-coloured, wheeled *dish* with a smoothed rim. Rd: 24 cm (fig. 6, 13).
32. Brick-coloured, wheeled *dish* with a smoothed rim. Rd: 40,8 cm (fig. 6, 14).
33. Light grey, wheeled *dish* with a bent out rim, smoothed on the outside. Rd: 33 cm (fig. 7, 1).
34. Blackish-grey, wheeled *dish* densely smoothed on the outside and in rather rare stripes on the inside, with a smoothed rim. Rd: 17 cm (fig. 7, 2).
35. Light grey, wheeled *dish* smoothed on the outside and on the rim; on the latter ribbed grooves can be found for the lid. Rd: 24 cm (fig. 7, 3).
36. Grey, wheeled *dish* smoothed in stripes on the outside and on the inside as well. Rd: 21 cm (fig. 7, 4).
37. Light grey, wheeled *dish* smoothed in horizontal stripes on the inside as well as on the outside and on the rim, having wavyly smoothed ribs on its body. Rd: 24,8 cm (fig. 7, 5).
38. Grey, wheeled *dish* smoothed in stripes on the outside, on the inside and on the rim as well. Rd: 28 cm (fig. 7, 6).
39. Grey, wheeled *dish* smoothed in stripes on the outside and on the inside as well. rd: 28 cm (fig. 7, 7).
40. Brick-coloured, wheeled *dish*, smoothed in stripes on the outside and on the rim. Rd: 12 cm (fig. 7, 8).
41. Grey, wheeled *dish*, smoothed in stripes rather rarely on the outside and densely on the inside and on the rim. Rd: 26 cm (fig. 7, 9).
42. Brick-coloured, wheeled *dish*. Rd: 25 cm (fig. 7, 10).
43. Brick-coloured, wheeled *dish*, smoothed horizontally on the outside. Rd: 25 cm (fig. 7, 11).
44. Light grey, wheeled *dish* smoothed in horizontal stripes on the inside as well as on the outside. Rd: 30 cm (fig. 7, 12).
45. Grey, wheeled, hemispheric *dish* with a groove under its rim, smoothed in rather rare horizontal stripes on the inside as well as on the outside and on the rim. Rd: 26 cm (fig. 7, 13).
46. Grey, wheeled *dish* smoothed in horizontal stripes on the outside and on the rim. Rd: 28 cm (fig. 7, 14).
47. Grey, wheeled *dish*, polished on the outside and smoothed in rather rare stripes on the inside. Rd: 28 cm (fig. 7, 15).
48. Grey, wheeled *storage vessel* of small size. There is a rib under its broad neck and a smoothed-in wavy line under the rib. The neck and the bulge are smoothed in rather rare stripes, while the rim is densely smoothed. Rd: 20 cm (fig. 8, 1).
49. Grey, wheeled *spherical vessel* with grooves on the neck arc-like motives under the rim and between the grooves. Rd: 21 cm (fig. 8, 2).
50. Dark grey, wheeled *spherical vessel* smoothed densely on the outside and on the rim. Rd: 18 cm (fig. 8, 3).
51. Light grey, wheeled *storage vessel*, with two grooves on the neck; the rim is horizontally smoothed. Rd: 24 cm (fig. 8, 5).
52. Grey, wheeled *spherical vessel*, smoothed in the upper part of the outside, on the rim and in one stripe on the inside of the rim. Rd: 19 cm (fig. 8, 4).
53. Light grey, wheeled *spherical vessel*, its surface is smoothed in stripes on the outside. Rd: 16 cm (fig. 8, 6).
54. Brick-coloured, wheeled *spherical vessel*, smoothed in stripes on the outside. Rd: 18 cm (fig. 8, 7).
55. Grey, wheeled *spherical vessel*, having a polished surface it is smoothed horizontally on the outside and on the inside of the rim, and in densely in vertical direction on the neck. Rd: 14,4 cm (fig. 8, 8).
56. Brick-coloured, wheeled *spherical vessel*, smoothed densely, in horizontal direction on the outside. Rd: 21 cm (fig. 8, 9).
57. Grey, wheeled *spherical vessel*, smoothed on the outside and inside and top of the rim. Rd: 15,2 cm (fig. 8, 10).
58. Light grey, wheeled *spherical vessel*. Rd: 16 cm (fig. 8, 11).
59. Light grey, *wheeled vessel*. Rd: 21 cm (fig. 8, 12).
60. Grey, wheeled *spherical vessel* smoothed on the inside of the rim in one stripe. Rd: 21 cm (fig. 8, 13).
61. Light grey, wheeled *spherical vessel* smoothed on the outside and on the rim in horizontal stripes. Rd: 19 cm (fig. 8, 14).
62. Grey, wheeled *spherical vessel*, smoothed on the outside and inside of the rim in stripes. Rd: 23,6 cm (fig. 8, 16).

63. Grey, wheeled *spherical vessel* with a groove on the neck. The inside of the rim is smoothed in stripes. Rd: 15 cm (fig. 8, 16).
64. Light grey, wheeled *spherical vessel* smoothed on the inside and on the top of the rim. There is a rib on the neck. Rd: 14 cm (fig. 8, 17).
65. Grey, wheeled *spherical vessel*, smoothed rather rarely on the outside and densely in stripes on the inside. Rd: 17 cm (fig. 8, 18).
66. Grey, wheeled *spherical vessel* with a groove on the shoulder. Rd: 14 cm (fig. 8, 19).
67. Grey, wheeled *spherical vessel*, smoothed in stripes on the inside of the rim. Rd: 15,4 cm (fig. 8, 20).
68. Light grey, wheeled *spherical vessel*. Rd: 17 cm (fig. 8, 21).
69. Grey, wheeled *spherical vessel* with a rib on the neck and two smoothed stripes above the rib. Rd: 14 cm (fig. 8, 22).
70. Light grey, wheeled, large *spherical vessel* with a rib on the shoulder. Rd: 22,2 cm (fig. 8, 23).
71. Grey, wheeled *storage vessel*, with a smoothed in striped surface on the bent out rim, having a rib on the neck. Rd: 34 cm (fig. 9, 1).
72. Grey, wheeled *storage vessel*, smoothed on the rim. Rd: 20 cm (fig. 9, 2).
73. Grey, wheeled *storage vessel*, with a rim bent out horizontally. Rd: 35 cm (fig. 9, 3).
74. Grey, wheeled *storage vessel*, with a rib on the neck, above which there is a striped, horizontally smoothed surface. Rd: 20 cm (fig. 9, 4).
75. Grey, wheeled *storage vessel*, smoothed in stripes on the outside and on the horizontally bent out rim. Rd: 35,2 cm (fig. 9, 5).
76. Brick-coloured, *wheeled storage vessel*, with a rib on the neck, smoothed on the rim and on the outside. Rd: 25 cm (fig. 9, 6).
77. Grey wheeled *storage vessel*, smoothed on the rim and on the outside. Rd: 26 cm (fig. 9, 7).
78. Grey, wheeled *storage vessel*, with a rib on the neck (fig. 9, 8).
79. Base fragment of a grey, wheeled *storage vessel*, with thick walls and a cut bottom. Bd: 15 cm (fig. 9, 9).
80. Grey, wheeled *storage vessel*, with grooves on the neck, smoothed horizontally under the grooves on the outside (fig. 9, 10).
81. Base fragment of a grey, wheeled *storage vessel*, with thin walls and a cut bottom. Bd: 12 cm (fig. 9, 11).
82. Grey, wheeled, large *storage vessel*, with a rib on the shoulder, smoothed-in wavy line ornamentation from above the rib to the bending of the neck (fig. 9, 12).
83. Fragment of a small, brick-coloured, wheeled *spherical vessel* of mug, with a groove on the neck (fig. 10, 1).
84. Grey, wheeled *spherical vessel*. Rd: 15 cm (fig. 10, 2).
85. Base fragment of a light grey, wheeled *dish*, with an asymmetrically placed cross, carved into the bottom before burning. Bd: 6,2 cm (fig. 10, 3).
86. Base fragment of a grey, wheeled *spherical vessel* with thick walls. Bd: 5,4 cm (fig. 10, 4).
87. Medium grey, wheeled *spherical vessel*, smoothed on the rim. Rd: 14 cm (fig. 10, 5).
88. Base fragment of a brick-coloured wheeled *jug*. Bd: 8 cm (fig. 10, 6).
89. Base fragment of a grey, wheeled *spherical vessel*. Bd: 10 cm (fig. 10, 9).
90. Base fragment of a grey, wheeled *spherical vessel* with thick walls. Bd: 5,2 cm (fig. 10, 7).
91. Light grey, wheeled *spherical vessel*. Rd: 18 cm (fig. 10, 8).
92. Grey, wheeled *spherical vessel*. Bd: 9,4 cm (fig. 10, 10).
93. Light grey, wheeled *spherical vessel*. Bd: 6 cm (fig. 10, 11).
94. Grey, wheeled *spherical vessel*. Bd: 10 cm (fig. 10, 12).
95. Grey, wheeled *mug*, smoothed horizontally on the inside of the rim, and vertically on the neck on the outside. Rd: 8,8 cm (fig. 10, 13).
96. Grey, wheeled *lid*. Cs: 35 cm (fig. 10, 14).
97. Rim fragment of a grey, wheeled *jug*, with a ribbed rim. Rd: 9 cm (fig. 10, 15).
98. Side fragment of a grey, wheeled *storage vessel*, with a groove, above which the vessel is decorated with triangles filled with smoothed-in lines of changing direction (fig. 10, 16).
99. Dark-grey, polished *jug*, smoothed-in horizontally on the outside and inside and top of the rim, and densely, vertically on the neck. Rd: 15,4 cm (fig. 10, 17).
100. Grey, wheeled *jug*, with a rim having a circular cross section and a handle, which starts from the rim and at the top is divided by a small protruding part. Rd: 15,4 cm (fig. 10, 18).
101. Fragment of the so called ribbon handle of a grey, wheeled *jug*; it is decorated with a smoothed-in vertical zigzag line (fig. 10, 19).
102. Fragment of the handle of a grey, wheeled *jug*. (fig. 10, 20).
- 103–104. Fragments of handles of grey, wheeled *jugs*, having a circular cross section (fig. 10, 21–22).
105. Fragment of a polished, blackish-grey, wheeled *jug*. Rd: 18 cm (fig. 10, 23).
106. Fragment of the handle of a black, wheeled *jug*, smoothed in stripes (fig. 10, 24).
107. Grey, wheeled *jug* with one handle. Rd: 22 cm (fig. 10, 25).
- 108–111. Grey, wheeled *jug handles* (fig. 10, 26–29).
112. Grey, wheeled *storage vessel*. Rd: 23 cm (fig. 11, 1).
113. Grey, wheeled *storage vessel*, smoothed densely in double stripes on the horizontally bent out, grooved rim. Rd: 32 cm (fig. 11, 2).
114. Grey, wheeled *storage vessel*. Rd: 10 cm (fig. 11, 3).
115. Grey, wheeled *storage vessel*, smoothed in stripes on the inside and top of the rim. Rd: 28 cm (fig. 11, 4).
116. Grey, wheeled *storage vessel*, smoothed in three stripes at the top. Rd: 29 cm (fig. 11, 5).
117. Light grey, wheeled *storage vessel*, smoothed horizontally on the rim, having a smoothed in wavy line decoration on the neck. Rd: 26 cm (fig. 11, 6).
118. Grey, wheeled *storage vessel*, smoothed horizontally on the rim and on the outside. Rd: 38,4 cm (fig. 11, 7).
119. Medium grey, wheeled *storage vessel*, smoothed horizontally on the outside. Rd: 22,6 cm (fig. 11, 8).
120. Grey, wheeled *storage vessel*, smoothed horizontally on the top of the rim and on the neck. Rd: 25,4 cm (fig. 11, 9).
121. Grey, wheeled *storage vessel*, with a rib on the neck, smoothed on the outside, on the top of the rim and on the rib. Rd: 28,4 cm (fig. 11, 10).
122. Medium grey, wheeled *storage vessel* of rather small size, smoothed horizontally in stripes on the outside. Rd: 22,4 cm (fig. 11, 11).

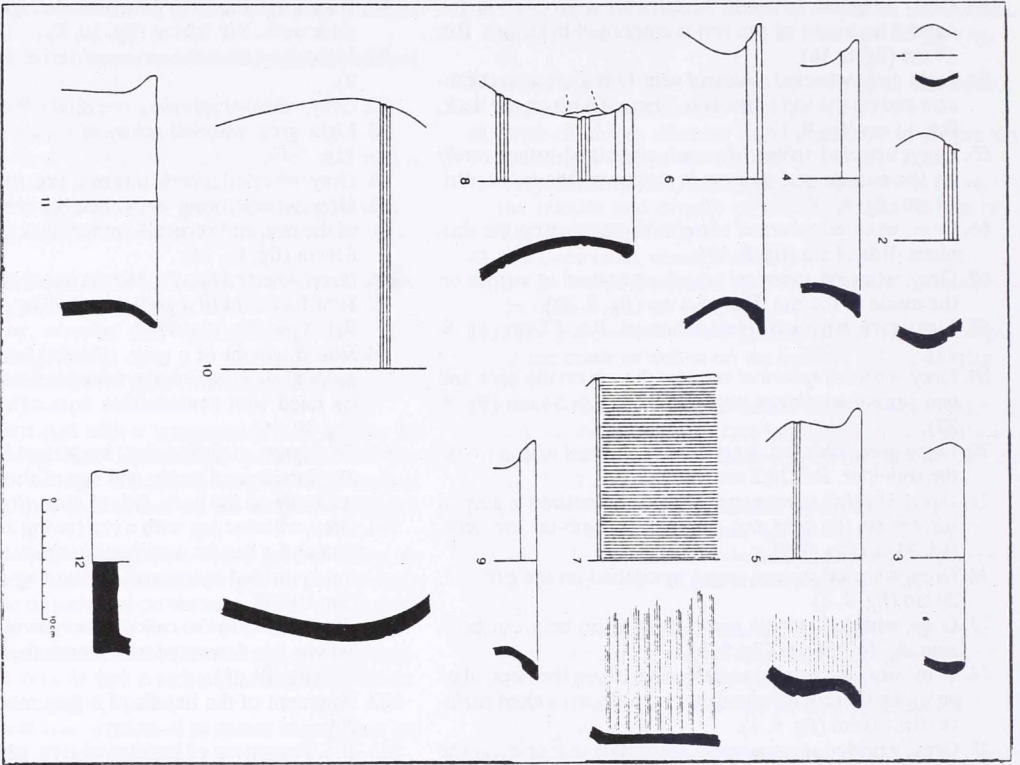


Fig. 13 1-2: Gyula-Szeregyháza, csatornaparti, 1st furnace; 4, 6: Gyula-Szeregyháza, csatornaparti, 1st furnace; 3, 5: Gyula-Szeregyháza, csatornaparti, 2nd furnace; 7-12: Gyula-Szeregyháza, csatornaparti, 2nd furnace

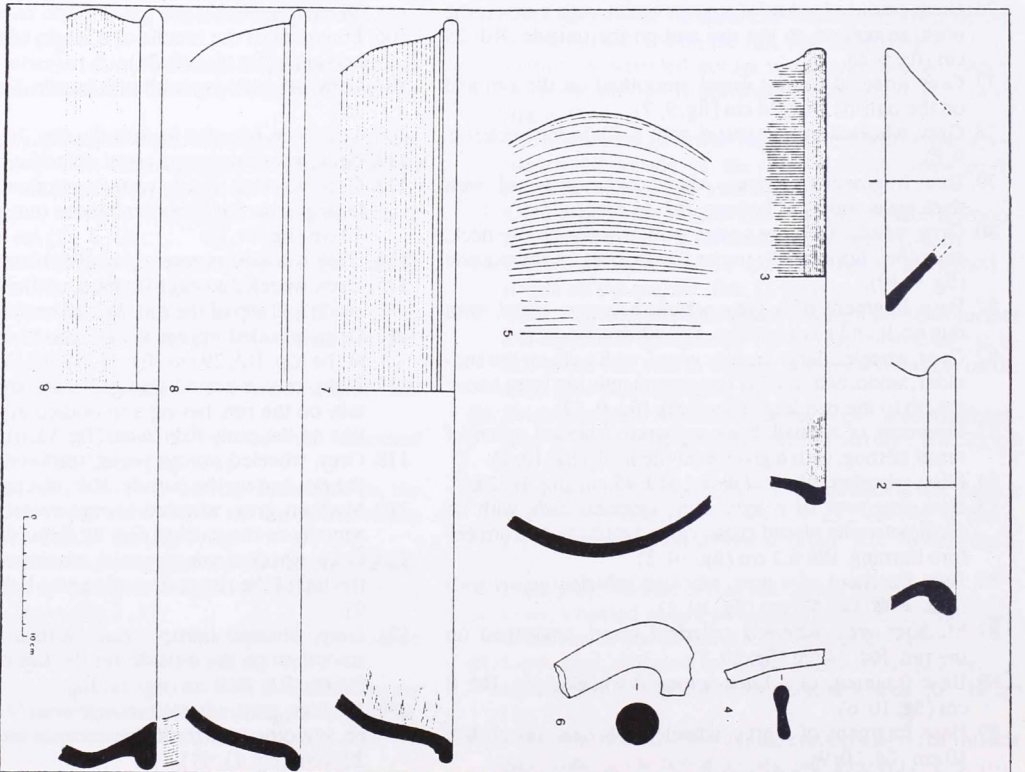


Fig. 14 1-9: Gyula-Szeregyháza, csatornaparti, sporadic finds

123. Grey, wheeled *storage vessel*, smoothed horizontally on the outside of the rim. rd: 32 cm (fig. 11, 12).
124. Brick-coloured, wheeled *vessel*, smoothed on the outside of the rim and on the inside. Rd: 18 cm (fig. 11, 13).
125. Grey, wheeled *vessel* smoothed in one stripe on the outside and inside of the bent out rim. Rd: 19 cm (fig. 11, 14).
126. Brick-coloured, wheeled *storage vessel*, with a bent out rim. Rd: 16 cm (fig. 11, 15).
127. Brick-coloured, wheeled *storage vessel*, smoothed on the rim. Rd: 20 cm (fig. 11, 16).
128. Base fragment of a grey, wheeled *vessel* with thin walls. Bd: 10.6 cm (fig. 11, 17).
129. Fragment of a small, brick-coloured, wheeled *vessel*, smoothed in stripes on the inside of the rim. Rd: 28 cm (fig. 11, 18).
130. Light grey, wheeled *vessel*, smoothed lightly on the outside. Rd: 36 cm (fig. 11, 19).
131. Grey, wheeled, straight walled, one handledd, so called: *beer-mug formed vessel*. The vessel is of poor quality, there are deep fingerprints around the bottom, the bottom itself is pierced through. Bd: 14 cm (fig. 11, 20).
132. Grey, biconical *spinning whirl* (was found at point D fig. 1a, fig. 12, 1).
133. Together with the spinning whirl Nr. 132, a grey, wheeled *storage vessel* also came to light. Its bottom was pierced before burning. Bd: 12 cm (fig. 12, 14).
134. A semi-processed *spinning whirl* (*disk*), made from the bottom of a brick-coloured, wheeled *vessel* (was found at point E fig. 1a, fig. 12, 2).
135. Blackish-grey, wheeled *jug*, with a circular protruding part on the top of the handle (fig. 12, 3).
136. Fragment of the handle of a grey, wheeled *jug* (fig. 12, 4).
137. Handmade, *lid*. the holder is divided by parts pressed-in with fingers. Kneaded with glittering materials. Handle Cs: 4,8 cm (fig. 12, 5).
138. Base fragment of a grey, wheeled *vessel*, burned secondarily, the material swelled and became like sponge. Bd: 13 cm (fig. 12, 6).
139. Fragment of the vertically smoothed handle of a grey, wheeled *jug*. (fig. 12, 7).
140. Brown, handmade *pot*. Rd: 16 cm (fig. 12, 8).
141. Brown, handmade *pot*. Rd: 18 cm (fig. 12, 9).
142. Fragment of the handle of a grey, wheeled *jug*. The handle presumably started from the rim (fig. 12, 10).
143. Slow wheeled *pot*. Kneaded with glittering materials. Rd: 22,6 cm (fig. 12, 11).
144. Slow wheeled small *pot*. Kneaded with glittering materials. Bd: 11,2 cm (fig. 12, 12).
145. Fragment of a *fire dog* burnt yellow (fig. 12, 13).
146. Fragments of *grates of a furnace*, burnt grey. The furnace was used for firing clay vessels (two of them: fig. 12, 15).
147. *Clay column* made of similar material as the grates Nr. 146, its cross section is circular at the bottom and oval at the top. There is a trace of breaking at the bottom (fig. 12, 16).

The other site is *Gyula-Szeregyháza, csatornapart* (canal bank). Imre Szatmári excavated a medieval church here in 1986. At the same time the building of a canal for the amelioration of the soil was in progress south-east of the excavated church. During canalisa-

tion potsherds and bones were found (fig. 1b); Imre Szatmári found here prehistoric and Roman potsherds. He excavated two, already partly destroyed furnaces some meters away from each other. (The material is in the Museum of Békéscsaba: Inv.Nr. 86.32.84-100.)

Material from the neighbourhood of the first furnace:

1. Light grey, wheeled *mug* (fig. 13, 1).
2. Fragment of a light grey, wheeled *spherical vessel*, with grooves on the neck (fig. 13, 2).
3. Slow wheeled *pot*. Kneaded with glittering materials. Rd: 23 cm (fig. 13, 4).
4. Larger slow wheeled *pot*. Kneaded with glittering materials. Rd: 26 cm (fig. 13, 6).

Material from the neighbourhood of the second furnace:

1. Grey, wheeled, bent in rimmed *dish*. Rd: 19 cm (fig. 13, 3).
2. Grey, wheeled *dish*, with a groove on the side, smoothed horizontally in stripes on the inside. Rd: 25 cm (fig. 13, 5).
3. Brick-coloured, wheeled *dish*, smoothed vertically on the outside and horizontally in stripes on the inside (fig. 13, 7).
4. Brick-coloured, wheeled *jug*, with two grooves on the neck and also two at the joining of the neck and the bulge. The stump of the handle starts from the bending of the neck. Rd: 12 cm (fig. 13, 8).
5. Grey, wheeled, unpolished *storage vessel*, with two grooves on the shoulder (fig. 13, 10).
6. Brown, handmade *pot*. Rd: 21 cm (fig. 13, 11).
7. Blackish-brown, handmade *pot*. Bd: 15 cm (fig. 13, 12).
8. Blackish-brown spotted, small rectangular *vessel*, with a carved tomga on one of its shorter sides. Rd: 5 cm-6 cm, Bd: 3,5-4 cm-6 cm (fig. 2, 1; fig. 4, 4).

In the first furnace, apart from the above listed fragments, there were 7 fragments of grey *storage vessels*, 1 fragment of a similar *jug*, 2 side fragments of slow wheeled *pots*, kneaded with glittering materials.

In the material of the second furnace, apart from the above listed fragments, there were 5 fragments of *vessels* (cannot be defined more specifically) and 6 fragments of slow wheeled *pots*, kneaded with glittering materials.

Sporadic finds:

1. Light grey, wheeled *lid*. D. 22 cm (fig. 14, 1).
2. Similar, but lightly sandy kneaded *spherical vessel*. Rd: 21 cm (fig. 14, 2)
3. Light grey, wheeled, large *jug*. smoothed horizontally on the outside and inside of the rim, vertical smoothed-in decoration on the neck. Rd: 19 cm (fig. 14, 3).
4. The SZALAG handle of a grey, wheeled *jug*. (fig. 14, 4).
5. Grey, wheeled *jug*. smoothed vertically (fig. 14, 5).
6. Fragment of the handle of a grey, wheeled, unpolished *jug*; the handle has a circular cross section (fig. 14, 6).
7. Fragment of a dark-grey, wheeled, large *dish*, smoothed horizontally on the outside and in changing direction on the inside. Rd: 31 cm (fig. 14, 7).
8. Fragment of a grey, wheeled *storage vessel*, with a broad orifice, deformed after burning. The wall of the vessel

swelled at various points. The rim and the outside of the vessel is densely smoothed. Rd: 32 cm (fig. 14, 9).

9. Light grey, wheeled, large *dish*. Rd: 33 cm (fig. 14, 8).

Sporadic finds not listed above: 1 side fragment of a grey, wheeled *storage vessel*, 2 vertically smoothed side fragments of jugs and 2 side fragments of pots, kneaded with glittering materials.

Beside the generally known settlement ceramics, the typical Hunnic period, late-Sarmatian find material, the slow wheeled vessels kneaded with glittering materials can also be found in the material of both sites. Among the various types of dishes, there is a dish, with smoothed-in decoration on both sides, having a handle tightly fitted to the body of the vessel (fig. 5, 8), which can be used for giving a more exact chronological definition. Although these types of dishes, having a late-Hellenistic origin, appear on the Great Hungarian Plain already in the 2nd century AD, their variations with smoothed in decoration are characteristic of the late settlements (VADAY 1988–89, fig. 41, 46). The other characteristic late type of dishes is the fig 6/1. Its analogy came to light for example in Tiszalök-Rázom puszta, in Újföldeák-Halesz (PÁRDU CZ 1959, XXI. T. 11; XX. T. 17) and in grave 40 of the cemetery excavated at Csongrád Kenderföldek (PÁRDU CZ 1959, XVI. T. 8). In the latter case an eastern type sword with double cross bar was found in the same grave (PÁRDU CZ 1959, 313, 1. T. 8). The sword had already been bent before it was put to the grave. The analogy of the dish on fig 7/1 was also found at Csongrád-Kenderföldek, in grave 104 (PÁRDU CZ 1959, XVII. T. 6). The jug and the mug, where the handle starting from the rim and having a circular cross section is divided by a small protruding part at the top, are also characteristic of the Hunnic period late-Sarmatian find material. These we also have in the material described above: fig. 10, 18 and fig. 12, 3. Their analogies in the Carpathian Basin are known from the trans-Tisza region (VADAY 1988–89, fig. 37, 1–2; PÁRDU CZ 1950, CXXXI. T. 7). The vessel, having thick, steep walls (fig. 11, 20) is a variation of a rare late jug-type (VADAY 1988–89, fig. 45, 8). The quantity of the material of the two above described sites is different, but there are certain vessel-types which are present in both of them. Such vessel-types are the very large dishes, the jugs with thick handles having a circular cross section, and the wheeled lid. The latter is rather sporadic in the material of the Great Hungarian Plain. The grates of the furnace in the Sarkad material show the function of the furnace too, i.e. that it was used for firing clay vessels, which means that a potter worked on the settlement. As a contrast, in the material from Gyula-Szeregháza secondarily burnt potsherds can be found, but there were no furnace grates, the excavated furnaces were not used for the same purpose as at Sarkad. The secondarily burnt potsherds were probably used for the plastering up of the furnaces.

The two above described sites are connected not only by the similar type of vessels of the same period, but also by a type of vessel, having a peculiar form and function. This type of vessel is the rectangular vessel, which differs from the usual find material not only in their form, but also in their ornamentation.

Rectangular vessels were already made from the Neolithic to the Bronze age (KOVÁCH 1894; KOVÁCH 1898; KALICZ 1970). It appears in the southern part of Scandinavia, in Jylland, west of this region, near the sea coast and east of this region, on the coast of the Pomeranian Gulf (BOCKIUS 1990).

This vessel-type was also present in the Sarmatian material of the Great Hungarian Plain, but the researchers did not pay attention to it. The rectangular vessels sometimes were even left out from publications.

Rectangular vessels are known from the following places in the Carpathian Basin:

Hódmezővásárhely–Solt–Palé: a part of a Sarmatian settlement was excavated and in the material of one of the pits there was a fragment of a grey rectangular vessel, made of well kneaded clay, decorated on the side with a carve motif. (Museum of Hódmezővásárhely, Inv.Nr. 948, 1937. According to the data of the inventory book, the rectangular vessel was found in pit Nr. 22, the publication deals with it as a vessel which cannot be reconstructed and says that it is from pit Nr. 25 (PÁRDU CZ 1938, 111, fig. 12, 7).

A fragment of a similar, but unornamented grey vessel was found at the Hunnic period, late-Sarmatian part of the settlement excavated at *Tiszaföldvár–Téglagyár* (Museum of Szolnok, Inv.Nr.-unpublished).

The third rectangular vessel came to light at *Szeged, Alsótanya, Kenyérváróhalom* (Museum of Szeged, Inv.Nr. 12, 1904 D).

At the Kenyérváróhalom and in its vicinity finds of various character and age came to light already in 1903. (it is neither clear from the inventory book, nor from the publication, whether the rectangular vessel in the museum was found on the hill itself, or nearby, at the bank of the Körös-brook from where soil was taken for road building, (TÖMÖRKÉNY 1903, 387–388). The vessel is light brown, handmade, kneaded with broken potsherds. Rd: 4 cm–4,4 cm–3,4 cm–5 cm; Bd: 3,7 cm–3,4 cm–3,3 cm–3,6 cm; H: 4,2 cm (fig. 16, 23). At the site there were traces indicating a site and others indicating a cemetery, consequently today we already cannot define where is the rectangular vessel from.

A dark-grey rectangular vessel, decorated with pressed in circles on the sides and on the top of the rim can also be found in the Museum of Szeged. Rd: 6,4 cm–5 cm; Bd: 5,6 cm–4,5 cm; H: 3,6 cm (Museum of Szeged, Inv.Nr. 9, 1909, C; fig. 16, 1). The vessel is very likely to come from a grave. 14 hexagonal karneol pearls (fig. 16, 2). 1 larger calcium pearl (fig. 16, 4), 648 spherical, red. white and brown glass pearls (fig.

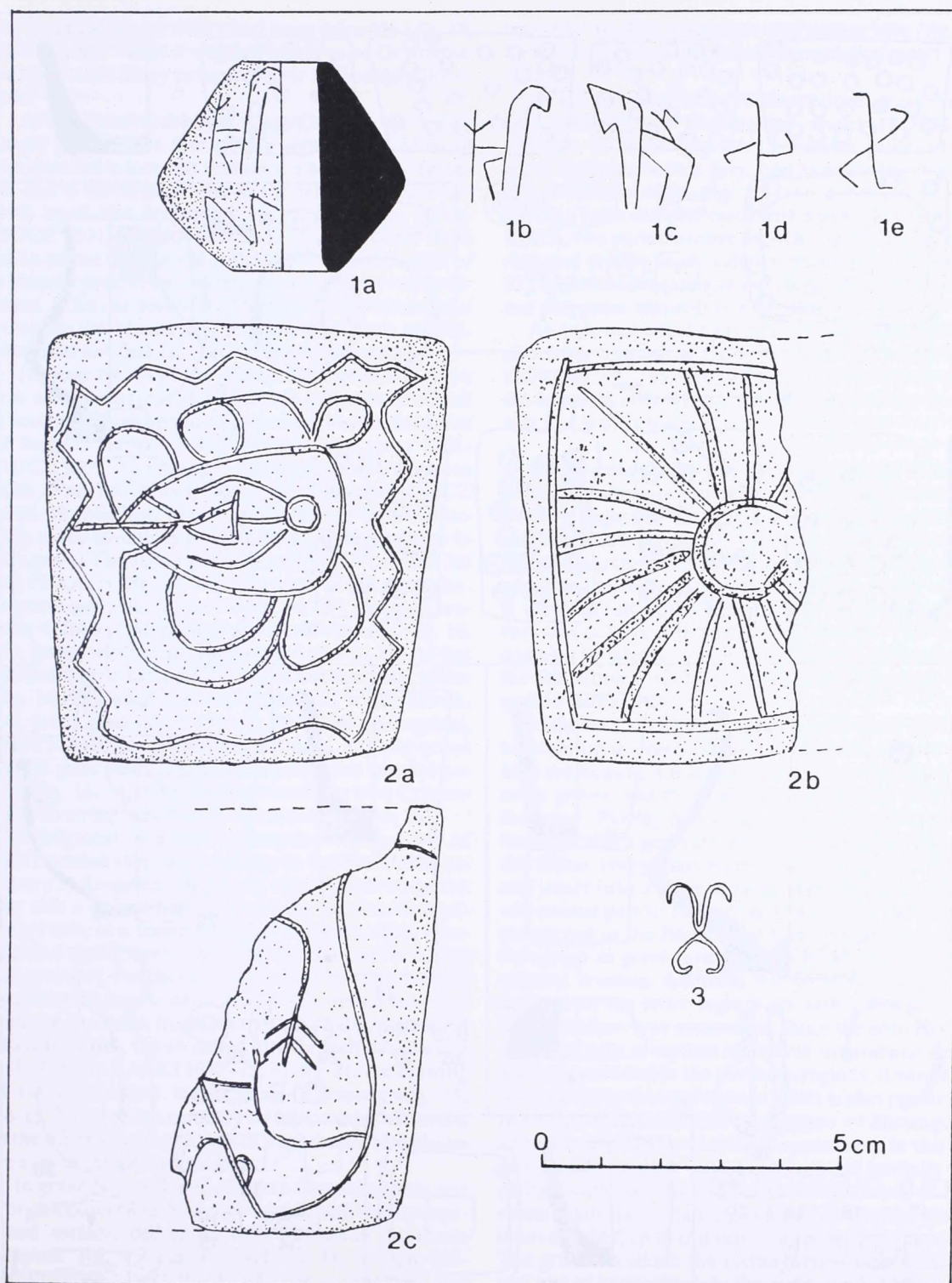


Fig. 15 1a-e: Csongrád, Határ út; 2a-c: Kovačica; 3: Dunaharaszti

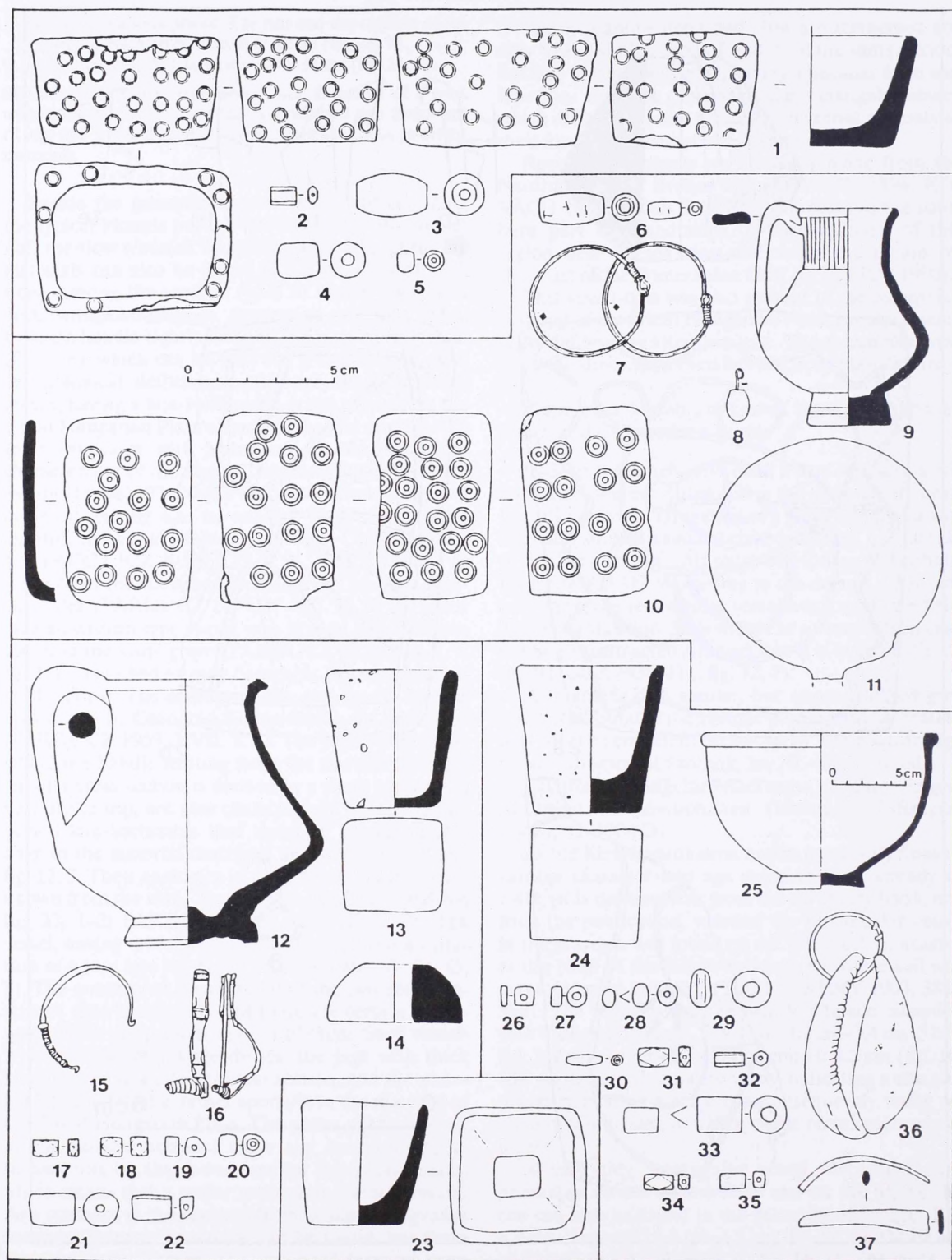


Fig. 16 1-5: Újszentiván, téglagyár; 6-11: Červenka, grave Nr.1; 12-22: Vojlovica Pančevo, grave Nr.38; 23: Szeged, Alsótanya, Kenyérváródomb; 24-37: Finds from Klárafalva-B cemetery, grave Nr.54

16, 5) and a 2,5 cm wide pearl from calcedon (fig. 16, 3). The place where it was found is said to be Dorozsma, but it is more likely to be Szőreg or Újszentiván-Téglagyár.²

At Hódmezővásárhely-Kopáncs, behind the Szentitánya, graves were found during rigolirosing. Most of the material is lost, but remained a bronze wire bracelet and a rectangular vessel; the latter is decorated with lentil like deepenings on all four sides (PÁRDUCZ 1931, 93; PÁRDUCZ 1943, 164). Later there was a rescue excavation at the site. This time a part of a Hunnic period, late-Sarmatian settlement was excavated. (The old Inventory Number of the rectangular vessel in the Museum of Hódmezővásárhely is 1341. We could not find the piece in the store-room.)

In grave Nr. 54 of the Klárafalva-B cemetery there was an unornamented, handmade rectangular vessel, it was burnt grey and had a porous material (Museum of Szeged, Inv.Nr. 53.44.93). About the grave PÁRDUCZ 1931, 85 only says that three vessels came to light from the devastated grave. Later PÁRDUCZ 1950, 19 mentions only a grey, wheeled dish. According to the inventory book there were three vessels in this grave. The rectangular vessel Rd: 4,9 cm; Bd: 3,6 cm; H: 5,4 cm (fig. 16, 24). Moreover in the grave there was a grey, wheeled dish (fig. 16, 25), an open bracelet of iron plate, widening towards the ends (fig. 16, 37), green, white striped glass pearl (fig. 16, 29), 15 flat calcium pearls having the form of a rectangular prism (fig. 16, 33), spherical and cylindrical white, brown, red, green glass pearls (fig. 16, 26–28, 30); hexagonal, prism shaped green glass pearl (fig. 16, 32), polygonal purple glass pearl (fig. 16, 31), polygonal karneol pearls (fig. 16, 34) and a pendant made up of a Cypraea snail on a ring, which ends in a spring (fig. 16, 36).

A fragment of a grey rectangular vessel, made of well kneaded clay came to light in the Sarmatian cemetery at Kovačica. One of its sides is unbroken. On this side a carved human figure can be seen in horizontal axis, in a frame made up of semicircular, lobe-like and zigzag lines. Rd: 7 cm; Bd: 5,5 cm; H: 7,2 cm (Museum of Panchova, Inv.Nr. 3.651). The second, fragmentary side is decorated with a radial sun-disc while on the third, fragmentary side a pattern made up of arched lines, the so called pine-branch pattern can be found (BARAČKI 1972–73, 31, fig. 21; the drawing of the publication is not exact. Correctly: fig. 15, 2.a–c). This pattern can only be explained if we turn it to the other side, thus a part of a schematic bird can be seen on the side of the vessel.

In grave Nr.1 at Vrsáč-(Versec)-Červenka there was a brick-coloured rectangular vessel, with lightly smoothed surface, decorated with pressed-in dot-circle patterns. Rd: 4,2 cm; Bd: 4,2 cm; H: 6,5 cm. (SIMOVLJEVIĆ 1957, 95, 1, T.2. The author does not know about analogies of this vessel) (fig. 16, 10.) Moreover in the grave there was a small, one handled jug, with smoothed-in ornamentation (fig. 16, 9), a white metal mirror (fig. 16, 11), a pair of golden ear-

rings (fig. 16, 7), a glass pearl on a bronze wire (fig. 16, 8) and a cylindrical or barrel-like calcium pearl (fig. 16, 6).

At Pančevo-Vojlovica (Panchova) from grave Nr.38 an unornamented rectangular vessel (POPADIĆ 1984–85, IX. T.137 (fig. 16, 13. Further pieces of the grave furniture were a grey, one handled jug (fig. 16, 12), a spindle whirl (fig. 16, 14), a bronze earring having a node and decorated with a wounded wire (fig. 16, 15), two parted bronze brooch (fig. 16, 16), cylindrical and prism shaped calcium pearls (fig. 16, 19, 21, 22), spherical and polygonal glass pearls (fig. 16, 18, 2) and polygonal karneols (fig. 16, 17).

An unornamented rectangular vessel came to light also from a grave at Čurug (Csuruga, Csurog). (SIMOVLJEVIĆ 1957, 59, 7 footnote); the vessel is in the Museum of Novi Sad, it is not taken to the inventory and is unpublished.

Rectangular vessels are also known from Transdanubia, but they are not much like the ones from the Great Hungarian Plain. In Pannonia this vessel-type can be found in the find-complex of Csót-Újmajor (MRT 4. Archaeological Topography of Hungary) A pápai és zirci járás. Budapest 1972. 24. T.11), which is the material of the gothic tribes coming from the east and setting down here as foederati. This find-complex is dated to the end of the 4th – beginning of the 5th century AD by a typical eastern jug with torquated canneluras.

In the case of the rectangular vessels from the Barbaricum (in the cases where the circumstances of finding are known) it is common that they are from women's graves, and these always was another vessel in the grave. Putting one vessel into the grave as grave furniture was a general tradition at the Sarmatians of the Great Hungarian Plain, but putting more than one vessel into a grave is rather rare in the northern and central part of the region. Contrary to this, in the cemeteries of the Bácska and Bácság more vessels in one grave as grave furniture can be found more frequently. It means that from this point of view the cemeteries of the latter regions are rather like the eastern Cemahov-type cemeteries. Since the eastern type ceramics with complicated figural ornamentation is also concentrated in the southern regions. It would be obvious to say that the eastern effect is also present in the ritual traditions. But in the case of rectangular vessels it is probable that their appearance in this region beside another vessel can only be partially explained with eastern traditions. The function of this vessel is not the containing of food put into the grave, it has another, up to this time not recognised function. The graves in which the rectangular vessels were found are of approximately the same age SIMOVLJEVIĆ 1957, 58–59, dated the cemetery of Versec to the end of the 3rd-4th centuries AD. There is a Cypraea snail pendant among the finds, which in the Great Hungarian Plain appeared among the finds from two

periods rarely in finds from the end of the 2nd – first third of the 3rd century and more frequently in finds from the last third of the 4th – first half of the 5th century (VADAY 1988–89, fig. 7.); sporadically appears in the northern region of the Great Hungarian Plain, more frequently in the territory of the Bácska and the Bácság and very often between the Kőrös, the Maros and the Tisza, moreover at the southern part of the middle course of the Tisza, on the right bank of the Tisza around the mouth of the Kőrös and especially that of the Maros. This greater frequency of appearance is partially research-dependent, but the greater density is unambiguous, even if we take into consideration the above factor.) The rectangular vessel of Panchova caused problems because of its unusual shape, since this vessel-type was not known, this vessel was defined as local Sarmatian material. On the basis of its making, i.e. that it is handmade and roughly kneaded, the vessel was thought to carry Dacian characteristics (POPADIĆ 1984–85, 67). The grave was dated to the 3rd century (POPADIĆ 1984–85, 68), while its brooch was dated to the 4th century. The dating of the brooch is correct, though it cannot be dated more exactly. Although certain graves of the Panchova cemetery-part are from the 3rd century. There are graves from the end of the 4th century too. In the grave Nr.38 there was a bronze ear-ring having a node and decorated with a wounded wire. These appeared in the Great Hungarian Plain in the same periods as the Cypraea. (VADAY 1988–89, 46, fig. 4, 9–10.) In the material of the Middle Tisza region these can be put to the fourth type of ear-rings. This type also appears in a late grave-complex at Tiszaföldvár (VADAY 198–89, Cat. 318, 107, T4). There is a fragment of a similar ear-ring in the grave-find of Kunszentmárton Péterszög. Here the flat polygonal and the prism shaped hexagonal karneol pearls and the fillgree-granulated, inlaid brooch of eastern origin also date this type of ear-ring to the late period (VADAY 1988–89, Cat. 176, 55, T3).

We have already talked about the fact that the function of the rectangular vessels was probably not the storage of the food put to the grave. In the case of a part of these vessels there are traces of fire and soot on the inside of the vessel. It would be obvious to think of a lamp. In settlements sometimes appear rectangular clay lamps, but their proportions and material are different from the rectangular vessels' found graves.

Lamps appear in graves very rarely, they are not related to the sex of the dead person and are not followed by another vessel. That is why we presume that these, frequently ornamented, rectangular vessels are related to some kind of cult.

The data about the mythology and cults of the Sarmatians are rather sporadic. On the basis of the find-material and the observations at the excavations there presumably was a sun and a fire cult in the eastern territories, from the Carpathians to the Ural mountains

(HÄUSLER, 1983, 162–163. summarised). The fire cult is first of all related to women. Important parts of this are the ember-containing vessels and the vessels used for smoking aromatic substances (so called smoking-vessels) coming to light from women's graves. In these vessels resin or other aromatic substance was burnt. For a long time this group of finds was present only at the Sarmatians, but according to rather recent analysis, it also turns up among late-Schythian finds (DAŠEVSKAJA 1980).

The ember-containing vessels and the smoking-vessels are present on the whole territory inhabited by Sarmatians. Their variations in shape in certain cases indicate chronological and regional differences. The types of the smoking vessels of the early period (prochorovka culture) were discussed in a separate paper (MOŠKOVA 1963). She divided these vessels into five groups. The vessels having the shape of a high footed dish belonged to her first group. Moskova divided their development during the 4th–2nd centuries BC into three phases. The second group consisted of the dishes without a foot, they were dated to the same period as the previous group. The third group was the group of dish-shaped, plerced-rimmed vessels, which appeared in the 4th century BC. The variations of straight walled vessels made up the fourth group and the fifth group consisted of barrel-like vessels. These appeared in the 4th century BC and were in use until the 3rd–2nd centuries BC. With the types of smoking-vessels of the Crimean peninsula and the region of the Caucasus were most recently discussed by JAKOVENKO 1971; SMIRNOV 1973 separated twelve types of smoking and "make-up" vessels. He examined the chronological position and the area of distribution of these vessel-types. Moreover he dealt with their variations in the region of the Volga, in the area between the Volga and the Don, and in the southern foreground of the Ural during the lime of the Prochorov-, Suslov- and late-Sarmatian cultures.

Naturally this group of finds also appears west of the Don, but the shape variations of these vessels differ from the eastern-type vessels. Their area of distribution here only partially coincides with the territory of the Sarmatian culture. The smoking-vessels appearing in the cities around the Pontus are regarded by the researchers as the indication of Sarmatian presence in the region (ŠELOV 1972, 276). On the basis of the material from the western region, in the neighbourhood of the Dacian-Carpian territories the appearance of these vessels is rather sporadic. This fact can only partially be explained by the chronological position of certain types.

Up to now this group of finds was unknown in the Carpathian Basin. Similarly to the Dacian-corp borderland this can only be partially explained by the chronological position of these vessels. The same absence can be observed in the case of small, hanging mirrors with tamgas, these are completely missing from the material of the Carpathian Basin. Even such a typical

group of finds as the swords with a ringed hilt very rarely turn up in the material of the region. The tradition of giving a long and a short sword together as grave furniture is completely unknown here.

That is why it is so significant if a find from the above categories appears in the Carpathian Basin. There were some vessels coming to light from Jászberény, Mészhomok téglagyár, the exact circumstances of finding are not known, but on the basis of their unbroken state it is likely that they are from graves. Among these vessels there is a small, handmade vessel whose walls are pierced, it is like a straining vessel (PÁRDUCZ 1938–43, 57, II. T.4; PÁRDUCZ does not say anything about the shape of the vessel, his only remark is that the "more exact chronological position" of the vessel is not yet defined. (VADAY 1988–89, 174, 238, Cat. 45, 26, T.7.) The vessel is without analogies in the Carpathian Basin, PÁRDUCZ could not relate it to anything. On the East, though it is not general, but appears of more sites as a smoking vessel, which is sometimes placed onto an ember-containing vessel and they are put to women's graves together. The dish-like footed vessels served as ember-containing vessels, while into the smaller ones aromatic substances were placed (VJAZ'MITINA 1972, 156; SMIRNOV 1975, 172). A similar smoking-vessel with pierced walls was found in the kurgan at Bratskovo, in the Nr.8 grave at Zavetnoe (Crimea) (BOGDANOVA 1963, fig. 4, 20), beside Novocerkask (RAEV – KUNG – RJABOV 1979, 137, 138), in kurgan Nr.2 at the Donsk farm-house (VJAZ'MITINA 1972, 53, fig. 24, 2, fig. 71, 15; VYSOTSKAJA 1972, fig. 28, 12–13; PECENKIN 1905, fig. 45, 7). It also appeared in Olbla (PAROVIĆ–PEŠIKAN 1974, 120, fig. 99, 1), can be found at Neapolis Schytica in grave Nr.34 at place of bury Nr.57, dated to the 1st century AD. They cannot be dated more exactly, since their shapes are very much similar (ARSENEVA 1965, 170).

A special type of the ember-containing vessels is the vessel standing on a higher foot and having a body divided by horizontal ribs. Their rim is usually decorated with zigzag lines and lines of dots.

This special type of ember-containing vessels was found at the cemeteries of Bastecki, Porogi and Belbek. In Bastecki it was found in the grave of a woman oriented N-S, the vessel lay at the feet of the dead person. In this grave there also was a terra sigillata dish with a tamga carved into the already burnt dish (ARTEMENKO–LEVČENKO 1983, 145, 147–148, fig. 1, 6 and fig. 2, 1). On the left bank of the Dniester near the village of Porogi two graves came to light in grave Nr.2, which was the grave of a woman, oriented NE-SW, there was an ember-containing vessel beside the right leg of the skeleton (SIMONENKO–LOBAJ 1991, 34, fig. 23, 3 and photos 30, 1 and 31). There was a similar vessel at Belbek in grave Nr.176, it also was the grave of a woman (GUŠČINA 1982, 22, fig. 8, 27). Into these footed, horizontally ribbed ember-containing vessels smaller, handmade smoking-vessels were

placed; in the latter there was resin or another aromatic substance. The walls of the smoking-vessels were pierced at two or more places. Such is the vessel from Bastecki and Porogi as well (ARTEMENKO–LEVČENKO 1983, 147–148, fig. 1, 7 and 2, 4). The Porogi vessel is from the 1st century AD. In the inside of the vessel from Bastecki the burnt smoking substance accumulated in a blackish-grey layer. This vessel is dated to the 1st – beginning of the 2nd century AD (GUŠČINA 1982, fig. 8, 30), and can be related to the early Sarmatian finds of the Carpathian Basin through a characteristic type of golden ear-rings, a pair of which was found in one grave with the vessel.

One end of the thin golden plate narrows to a needle, while the other end widens like a funnel. Narrow golden plates are soldered wavyly onto the body of the ear-ring parallelly to each other and perpendicularly to the body of the ear ring itself. Such ear-rings are known in the material of the Carpathian Basin from two places the grave finds of Káposztásmegyér and of the vicinity of Eger. The above discussed types of ember-containing and smoking-vessels also have other relations to the material of our region. In Moldavia, in Vastul there was a ribbed, footed ember-containing vessel in a grove oriented N-S and dated to the 2nd–3rd centuries (ANDRONIC 1963, fig. 3, 6; BICHIR 1977, 16, T.21). In this ember-containing vessel a small, biconical vessel played the role of the smoking-vessel. Its shape is known in the material of the Carpathian Basin, but cannot only be related to this function (ANDRONIC 1963, fig. 3, 5; BICHIR 1977, 16, T.20). This grave find of Vastul is the most western Sarmatian grave in which the ember-containing and the smoking vessels can be found together and their function is unambiguous. The historical background of this find can also be defined. This grave is a proof of the fact that after the victory in 105/106 the Sarmatians coming from the east, invaded the territory east of the Prut (BICHIR 1977, 189). The vessel from Jászberény Mészhomok téglagyár is also an analogy of the above discussed small smoking vessel type having pierced walls and appearing in graves of the end of the 1st-beginning of the 2nd centuries AD. From later periods we do not know any graves in which any objects related to this cult would be placed. It can be explained with more things. One of them is the absence of research and the uncertainty of finding such objects (it is not really probable taking into consideration the number of known and publicised graves). The other thing is that the incoming group of people, which knows this custom, may change or even give up the tradition after setting down. Moreover there is a third, up to now not proved, possibility.

Though on the east the remains of this cult are sporadically present in graves from the whole territory invaded by the Sarmatians, there is no full analysis of these finds. We do not know much about the area of distribution of the different types of these vessels and it is even possible that these finds do not appear in all

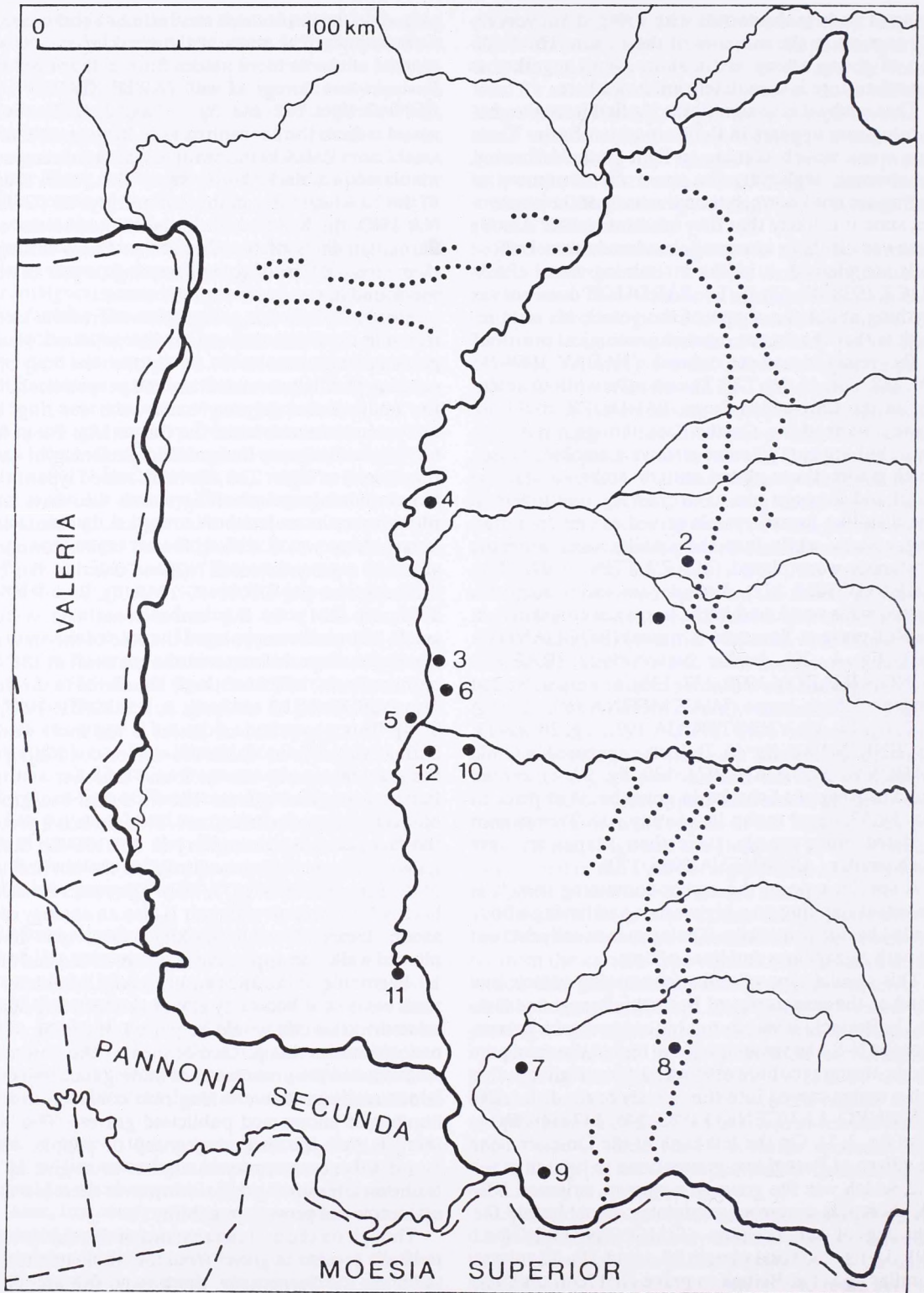


Fig. 17 Distribution of rectangular vessels in the Carpathian Basin

regions of the Sarmatian territory, i.e. there might be greater contiguous territories where the remains of this cult are missing from the graves. This could be explained by the fact that not all Sarmatian tribes or tribe fragments knew and used these vessels. If this statement could be proved then the possibility would be given that these tribe fragments were the ones who wandered into the Carpathian Basin first, and the did not bring the cult here, since they did not know and use it before. This argument would not only strengthen the idea of the gradual immigration into the Carpathian Basin, but would also help in defining the more exact place where the immigrants came from.

There is a type of smoking-vessels among the eastern ones having a special shape it is a little bit conical or has the shape of a rectangular prism (SMIRNOV 1973, type XII). This type is not known from the time of the prochorovka culture in the vicinity of the Volga, in the territory between the Don and the Volga and in the southern foreground of the Ural. In the former two territory it appears only in the suslov phase and is present even in the eastern late-Sarmatian period. In the southern foreground of the Ural it turns up only from the 2nd century AD, i.e. in the late-Sarmatian period. It indicates that this type of vessel is the result of a local development and only later spreads towards the east. Otherwise this vessel shape is also known in the Tastik culture (KYZASLOV 1960, 50, fig. 15, 3; fig. 29, 2 and XXV. T.5, XXIX. T.9) from already the 1st century BC in the Izyhski period and in the following syrski period (1st–2nd centuries AD).

There is a variation of the rectangular smoking-vessels, whose corners are raised above and out of the line of profile of the vessel. such is for example the vessel from a woman's grave excavated beside the town of Groznom in the region of the southern Ural (VINOGRADOV 1963, 85, fig. 37, 5).

Such vessel with an ember-containing, high footed, also rectangular vessel was found beside the village of Komsomolsk in the 3rd kurgan of the fourth group of kurgans in a grave oriented S-N and containing a woman's skeleton having a deformed skull. Among the grave furniture there was a Chinese mirror (PSENIČNJUK 1983, 72, LIX. T.45).

The rectangular vessels from the Carpathian Basin are partially ornamented. Their ornaments, the primitive circle, dot-circle pressed in motif, made with the help of reed or ivig in some cases also appear on handmade pots.

However the tamga is not a typical motif of ornamentation in the Carpathian Basin. It is known from early gold finds of eastern origin (VADAY 1989). The cause of its absence is presumably the fact that it is a tribal symbol, and while on the east it had the role of differentiation, in the Carpathian Basin it became redundant, because in the case of a homogeneous immigrating tribe there is no need for such a symbol. Consequently it is present in the material of the first generation and later disappears. During the late-Sar-

mation period the presence of various tribal fragments would give reason for the use of tamgas, but up to this time we do not have such a great quality of material having tamgas that would prove their use as a differentiating mark. Tamgas appear in the Carpathian Basin on local handmade pottery, these vessels were presumably used by the population, just immigrated and settled down, but their function is not usual, they serve as vessels used in cults.

The ornamented rectangular vessels from Kovacica and Sarkad-Kőröshát are individual specimen as for as their ornamentation is concerned.

The three sides of the Sarkad-Kőröshát vessel have different ornamentation, the side on fig 4/3 seems to be decorated with three carved "field-filling" motives and a schematic snake. The snake appears on the other two side as well (fig. 4, 1–2). On fig. 4, 1 an animal and a bird can be seen, on fig. 4, 2 there is a portrayal of a human figure. The other carved and pressed in patterns have no unambiguous meanings. On the vessel of Kovacica a human figure can be seen in a frame, the ornamentation of the other, fragmentary side cannot be explained unmistakably.

The situation is the same in the eastern Sarmatian material.

A vessel with carved ornamentation came to light from grove Nr.2 of first group of kurgans in the kurgan-group cemetery of Jasyrev, on the left bank of the Don (MOŠKOVA–MAKSIENKO 1973, 72, fig. 28, 1a–b). The grave was oriented to SW-NE and was dated to the 6th–4th centuries BC. Ceramics with similar carved ornamentation appear and spread in the 6th–4th centuries BC in the region of the lower course of the Volga and in the southern part of the Ural region (SMIRNOV–PETRENKO 1963, Tab. 7. 15, 31; 8. 1, 11, 14, 18, 23, 27; 9. 5). In graves Nr1 and Nr2 of the first kurgan of the second group of kurgans in Alandsk the carved ornamentation also appears on handmade pottery (MOŠKOVA 1961, 122, fig. 48, 4 and fig. 47, 12). The find is dated to the 5th century BC. Among the carved motives there are symbols which are clear and can be interpreted, but their exact analogies are not known, though some of their elements repeatedly appear, i.e. a similar phenomenon can be observed in the eastern material as in the material of the Carpathian basin.

The distribution of the rectangular vessels in the Carpathian Basin, inside the Sarmatian-Roman earthworks is not homogeneous. They are fully absent in the upper Tisza region, in the trans-Tisza region and between the Danube and the Tisza. They are known only from two places right of the Tisza, these places are situated near to the river. These vessels appear more frequently at the middle- and southern course of the Tisza, even in the eastern part of the Sarmatian Barbaricum (fig. 17).

This is the region where, in the last third of the 4th- and in the first half of the 5th centuries, the vessels with figural and complicated smoothed-in ornamen-

tation, household pottery kneaded with glittering materials, clay kettles, spouted jugs etc. (VADAY 1980–81a) are concentrated. These vessels are of eastern origin or were made in Sarmatian workshops according to the eastern taste.

On the basis of the facts discussed above, we can say that the rectangular smooking-vessels appear only in a small part of the Barbaricum. consequently it in

dicates Iranian ethnic elements coming into, and setting down in the Carpathian Basin (these vessels can also be found in settlement materials!). This group of people knows and "uses" a cult of the East, puts the objects related to this cult to the graves and since the cult itself is related to women, these objects appear in their graves.

Notes

- 1 The material coming to light recently at Sarkad-Kőröshát, református temető is in the Munkácsy Mihály Museum in Békéscsaba. The data related to the site and to the material were collected by Pál Medgyesi. The material from Gyula Szeregháza is also in the mentioned museum, Inv. Nr. 86.32.84-100. Here I would like to express my thanks to Imre Szatmári for giving the material for publication. For Gyula-Szeregháza see RégFüz.Ser.1. No 40 (1987) 100.
- 2 The person setting the finds to the museum was a navy, a citizen of Dorozsma. He stated that the finds came to

light at Dorozsma on the yard of his house, but the contemporary recording of the inventory Book of the Móra Ferenc Múzeum, Szeged puts a query against his announcement. This person worked at the brick factory, placed between Szőreg and Újszentiván, earlier and sold finds to the museum from this place in the previous year. According to the recording of the inventory book, this person was only interested in the money given for the finds and that is why he gave the mistaken data. Moreover the character of the finds corresponds with that of the earlier finds from the brick factory.

BIBLIOGRAPHIE

- ANDRONIC 1963
Al. ANDRONIC, *Un mormint sarmatic descoperit la Vaslui*. SCIV 14 (1963) 347–358.
- ARSEN'EVA 1965
T. M. ARSEN'EVA, *Lepnaja keramika Tanaisa*. MIA 127 (1965).
- ARTEMENKO—LEVČENKO 1983
I. I. ARTEMENKO—B. M. LEVČENKO, *Sarmatskie pogrebenija u s. Bastečki Čerkasskoj obl.* SA 2 (1983) 144–151.
- BARAČKI 1972–73
S. BARAČKI, *Nalasi Sarmata u Južnom Banatu*. (Katalog) 1972–73.
- BICHIR 1977
Ch. BICHIR, *Les Sarmates au Bas-Danube*. Dacia 21 (1977) 167–197.
- BOCKIUS 1990
R. BOCKIUS, *Ein ungewöhnliches Tongefäß und weitere bemerkenswerte Funde der Zeit um Christi Geburt aus Neuwied, Stadtteil Heimbach-Weis*. AKorrM 20 (1990) 317–324.
- BOGDANOVA 1963
N. A. BOGDANOVA, *Mogil'nik I st. do n.e.-III st. n.e. biljas, Zavitie*. Arheologija 15 (1963).
- DAŠEVSKAJA 1980
D. D. DAŠEVSKAJA, *O skifskih kuril'nicah*. SA 1 (1980) 18–29.
- GUŠČINA 1982
I. I. GUŠČINA, *O lokal'nyh osobennostjah kul'tury naselenija Belbekskoj doliny Kryma v pervye veka n.ē.* in: *Arheologičeskie issledovanija na Juge-Vostočnoj Evropi*. II. Moskva 1982, 20–39.
- HÄUSLER 1983
A. HÄUSLER, *Beiträge zum Stand der Sarmatenforschung*. ZfA 17 (1983) 159–194.
- JAKOVENKO 1971
E. V. JAKOVENKO, *Pro kuljasti kuril'nici IV–I st. d.n.ē.* Arheologija 2 (1971) 87–93.
- KALICZ 1970
N. KALICZ, *Agyag istenek*. Budapest 1970.
- KOVÁCH 1894
A. KOVÁCH, *Szelevény vadasi virágcserep*. ArchÉrt 14 (1984) 191.
- KOVÁCH 1898
A. KOVÁCH, ArchÉrt 18 (1898) 137. és 157. old. ábrái
- KYZLASOV 1960
L. P. KYZLASOV, *Tastikskaia epoha y istorii hakassko-minusinskoj kotloviny*. Moskva 1960.
- MRT 4
Magyarország régészeti topográfiája. 4. A pápai és zirci járás. Budapest 1972.
- MARÓTI—VADAY 1980
E. T. MARÓTI—A. M. VADAY, *Koracsászárkori figurális díszítésű festett kerámia Pannoniában és a szarmata barbaricumban. – Frühkaiserzeitliche Keramik mit figuraler Verzierung in Pannonien und im sarmatischen Barbaricum*. StCom. 9 (1980) 79–94.
- MOŠKOVA 1961
M. G. MOŠKOVA, *Sarmatskie kurgany v orenburgskoj oblasti*. KSIA 83 (1961) 115–125.
- MOŠKOVA 1963
M. G. MOŠKOVA, *Pamjatniki prohorovskoj kul'turi*. Moskva, 1963.

- MOŠKOVA—MAKSIMENKO 1973 M. G. MOŠKOVA—V. E. MAKSIMENKO, *Sarmatskie pogrebenija Jasyrevskih kurganov Niznego Dona*. KSLA 133 (1973) 72–79.
- PÁRDUCZ 1931 M. PÁRDUCZ, *A Nagy Magyar Alföld római kori leletei. – Römerzeitliche Funde des Grossen ungarischen Alföld*. Dolg. 7 (1931) 74–186.
- PÁRDUCZ 1938 M. PÁRDUCZ, *Római kori lelőhely Hódmezővásárhelyen a Solt-Paléban. – Ein römerzeitlicher Fundort in Solt-Palé bei Hódmezővásárhely*. Dolg. 14 (1938) 92–114.
- PÁRDUCZ 1938–43 M. PÁRDUCZ, *Szarmatakori kerámia a Jászmúzeumban*. JJÉ 2 (1938–43) 51–57.
- PÁRDUCZ 1943 M. PÁRDUCZ, *Szarmatakori telep Hódmezővásárhely-Kopáncson*. Dolg. 19 (1943) 164–169.
- PÁRDUCZ 1944 M. PÁRDUCZ, *A szarmatakori emlékei Magyarországon. II. – Denkmäler der Sarmatenzeit Ungarns. II*. ArchHung 28. Budapest 1944.
- PÁRDUCZ 1950 M. PÁRDUCZ, *A szarmatakori emlékei Magyarországon. III. – Denkmäler der Sarmatenzeit Ungarns. III*. ArchHung 30. Budapest 1950.
- PÁRDUCZ 1959 M. PÁRDUCZ, *Archäologische Beiträge zur Geschichte der Hunnenzeit in Ungarn*. Acta ArchHung 11 (1959) 309–398.
- PAROVIČ—PEŠIKAN 1974 M. B. PAROVIČ—PEŠIKAN, *Nekropol' Ol'vii ellinističeskogo vremeni*. Kiev 1974.
- PEČENKIN 1905 N. PEČENKIN, *Raskopki v okrestnostjah g. Sevastopolja*. ITUAK 38 (1905).
- POPADIĆ 1984–85 B. D. POPADIĆ, *Sarmatska nekropola Vojlovica Pančevo*. RVM 29 (1984–85) 59–83.
- PŠENICNJUK 1983 A. H. PŠENICNJUK, *Kul'tura rannih kočevnikov Južnogo Urala*. Moskva 1983.
- RAEV—KLINC—RJABOV 1979 B. A. RAEV—E. K. KLINC—R. R. RJABOV, *Raskopki kurganov pod Novočerkasskom*. AO-1978. Moskva 1979.
- ŠELOV 1972 L. B. ŠELOV, *Tanais i Nižnij Don v pervye veķa našej ery*. Moskva 1972.
- SIMOVLJEVIĆ 1957 N. SIMOVLJEVIĆ, *Sarmatski stratum na Črvenci kraj Vršca*. RVM 7 (1957) 57–66.
- SIMONENKO—LOBAJ 1991 A. V. SIMONENKO—B. I. LOBAJ, *Sarmaty Severo-Zapadnogo Pricernomor'ja v I v.n.ē*. Kiev 1991.
- SMIRNOV 1973 K. F. SMIRNOV, *Kuril'nicy i tualetnye sosudki aziatskoj Sarmatii*. in: Kavkaz i Vostočnoj Evropa v drevnosti. Moskva 1973, 166–179.
- SMIRNOV 1975 K. F. SMIRNOV, *Sarmati na Ilike*. Moskva 1975.
- SMIRNOV—PETRENKO 1963 K. F. SMIRNOV—V. G. PETRENKO, *Savromaty Povol'zja i Južnogo Priural'ja*. SAI vyp. D 1–9 (Moskva) 1963.
- TÖMÖRKÉNY 1903 I. TÖMÖRKÉNY, *Asatásokról a Kenyérváródombon*. ArchÉrt 23 (1903) 387–388.
- VADAY 1980–81A A. H. VADAY, *Remerkungen zur Frage der eingeglätteten Keramik mit figuraler Verzierung*. MittArchInst 10–11 (1980–81) 121–130; 385–392.
- VADAY 1980–81B A. H. VADAY, *Későszarmata agyagbográcsok az Alföldön. – Spätsarmatenzeitliche Tonkessel von der Tiefebene*. MFMÉ (1980–81) 31–42.
- VADAY 1985 A. H. VADAY, *A bagi lelet. Újabb adat a későszarmata besimított kerámia kérdéséhez. – Der Fund von Bag. Weitere Beitrag zur Frage der spätsarmatischen eingeglätteten Keramik*. ArchÉrt 112 (1985) 25–35.
- VADAY 1988–89) A. H. VADAY, *Die sarmatischen Denkmäler des Komitats Szolnok. Ein Beitrag zur Archäologie und Geschichte des sarmatischen Barbaricums*. Antaeus 17–18 (1988–89).
- VADAY 1989 A. H. VADAY, *Sarmatisches Männergrab mit Goldfund aus Dunahaszti*. FolArch 40 (1989) 129–136.
- VJAZ'MITINA 1972 M. I. VJAZ'MITINA, *Zoloto-Bal'kovskij mogil'nik*. Kiev 1972.
- VYSOTSKAJA 1972 T. N. VYSOTSKAJA, *Požánye skify v Jugo-Zapadnom Krymu*. Kiev 1972.

A. Vaday
MTA Régészeti Intézete
Budapest, Úri u. 49.
H-1014

P. Medgyesi
Munkácsy Mihály Múzeum
Békéscsaba, Széchenyi u. 9. Pf. 46.
H-5601

